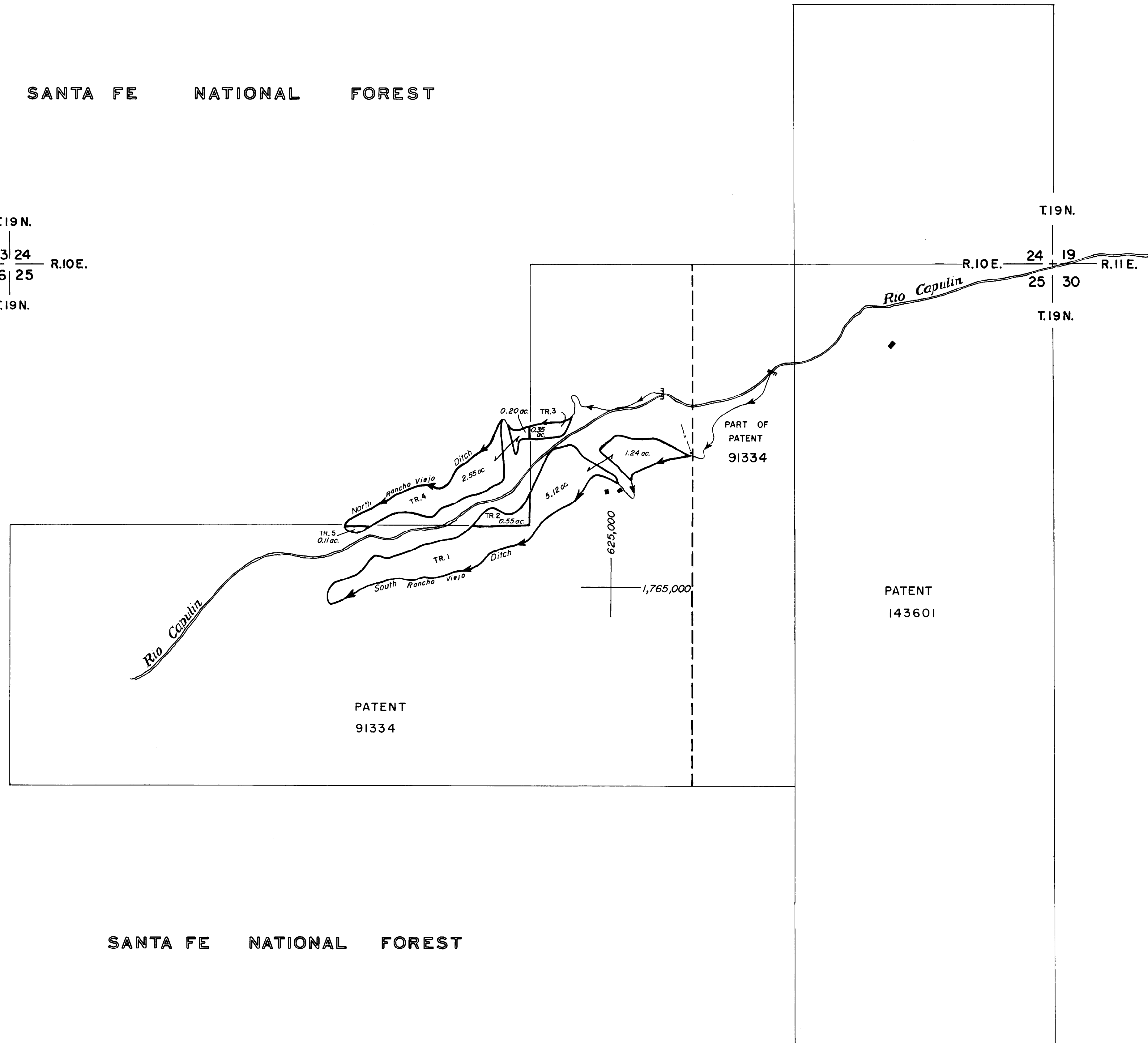

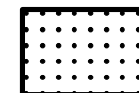
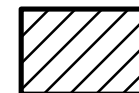


SANTA FE NATIONAL FOREST

T.19 N.  
 R.10 E. 23 24 R.10 E.  
 26 25  
 T.19 N.



**Legend**

-  Irrigated Tract Boundary
-  No Right Tract Boundary
-  Pond

SANTA FE NATIONAL FOREST

TOWNSHIP 19 NORTH — RANGE 10 EAST

STATE OF NEW MEXICO OFFICE OF THE STATE ENGINEER <small>Tom Blaine, P.E., State Engineer</small>		
UPPER RIO GRANDE HYDROGRAPHIC SURVEY NAMBE - POJOAQUE - TESUQUE 1964 - 2017 Final Judgment and Decree		
ENGINEER SURVEYOR STEREOCOMPILATION TRACED BY APPROVED	F. R. ALLEN E. C. COOPER J. L. THOMAS A. BACIGALUPA	SCALE 1" = 300' SHEET NO. 30