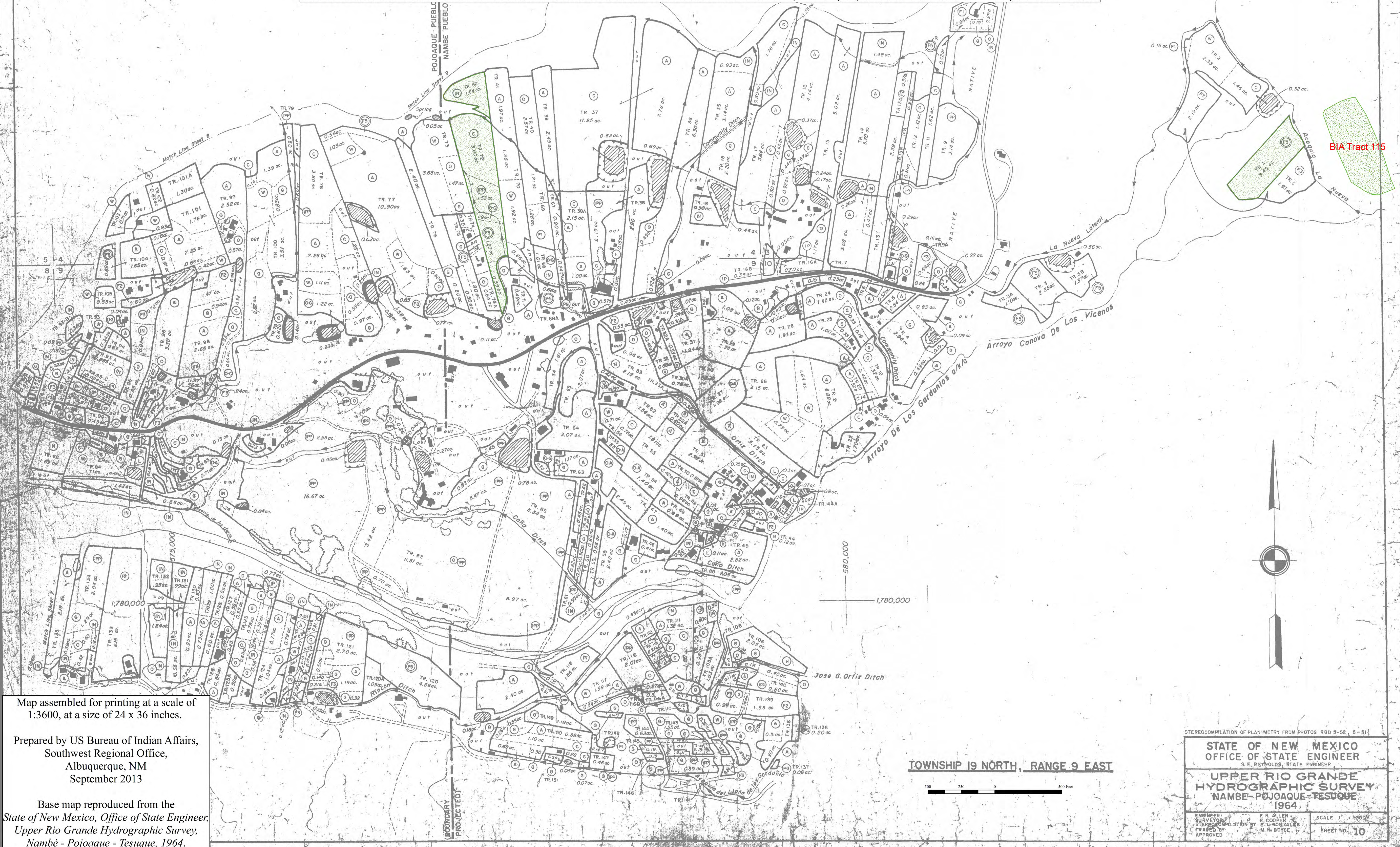


APPENDIX 1 - FIGURE 1 - Pueblo of Nambé Irrigated Lands

PARTIAL FINAL JUDGMENT AND DECREE OF THE WATER RIGHTS OF THE PUEBLOS OF NAMBE, POJOAQUE, SAN ILDEFONSO AND TESUQUE - APPENDIX 1

LEGEND
 Irrigated Tracts - See Table 1A



Map assembled for printing at a scale of 1:3600, at a size of 24 x 36 inches.

Prepared by US Bureau of Indian Affairs, Southwest Regional Office, Albuquerque, NM September 2013

Base map reproduced from the State of New Mexico, Office of State Engineer, Upper Rio Grande Hydrographic Survey, Nambé - Pojoaque - Tesuque, 1964.

TOWNSHIP 19 NORTH, RANGE 9 EAST

STEREOCOPIATION OF PLANIMETRY FROM PHOTOS RGD 5-52, 5-51

STATE OF NEW MEXICO
OFFICE OF STATE ENGINEER
 S. E. REYNOLDS, STATE ENGINEER

UPPER RIO GRANDE
HYDROGRAPHIC SURVEY
NAMBE-POJOAQUE-TESUQUE
 1964

ENGINEER: F. R. ALLEN
 SURVEYOR: E. COOPER
 STEREO-COPIATION BY: E. L. GONZALES
 TRACED BY: M. H. BOYCE
 APPROVED:

SCALE: 1" = 3600'
 SHEET NO. 10