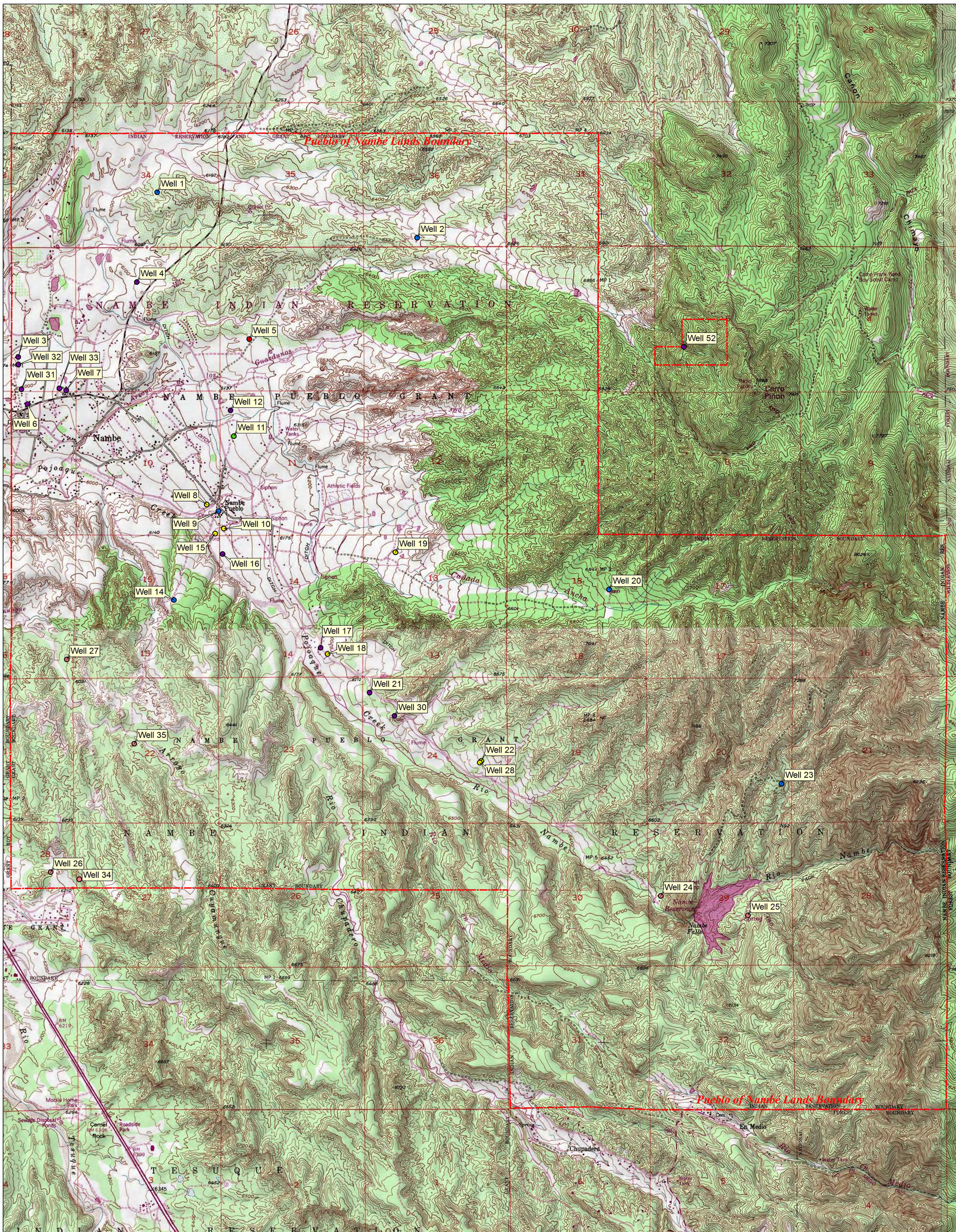
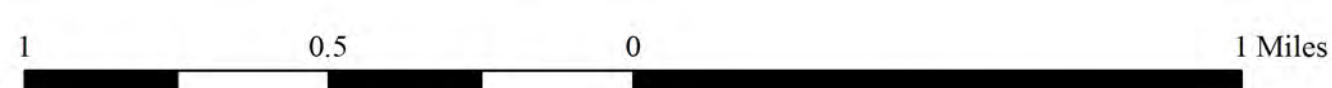


APPENDIX 1 - FIGURE 6 - Wells within the Pueblo of Nambé Lands

PARTIAL FINAL JUDGMENT AND DECREE OF THE WATER RIGHTS OF THE PUEBLOS OF NAMBE, POJOAQUE, SAN ILDEFONSO AND TESUQUE - APPENDIX 1



Nambe Wells (34 Total) ● Commercial (6) ● Community/Commercial/Domestic/Industrial (7) ● Domestic (13) ● Industrial (1) ● Irrigation (1) ● Livestock (6)



Map assembled for printing at 1:20,000, at size of 22 x 34 inches

Base map excerpts from
USGS 7.5 minute Quadrangles
Cundiyo & Tesuque, NM,
rendered in National Geographic
TOPO! Software

US Department of Interior,
Bureau of Indian Affairs,
Southwest Regional Office,
Albuquerque, NM,
September 2013