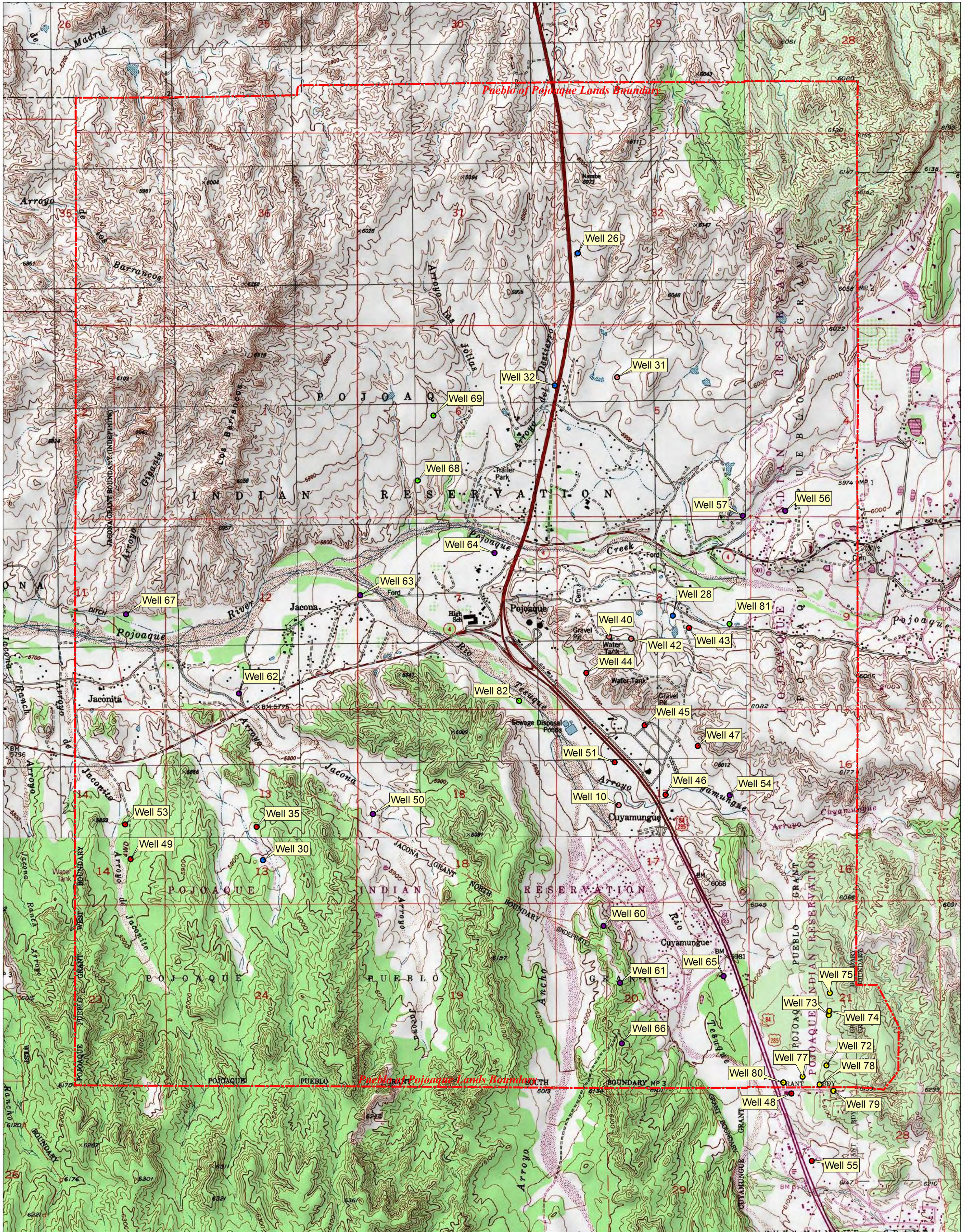
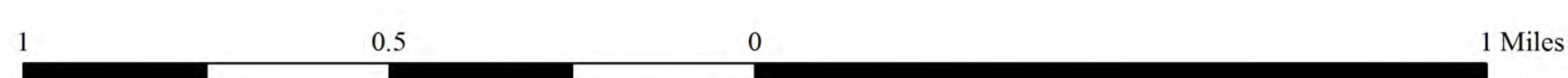


# APPENDIX 2 - FIGURE 3 - Wells within the Pueblo of Pojoaque Lands

PARTIAL FINAL JUDGMENT AND DECREE OF THE WATER RIGHTS OF THE PUEBLOS OF NAMBE, POJOAQUE, SAN ILDEFONSO AND TESUQUE - APPENDIX 2



Pojoaque Wells (43 Total) ● Commercial (8) ● Community/Commercial/Domestic/Industrial (4) ● Community/Commercial/Industrial (11) ● Domestic (12) ● Irrigation (4) ● Livestock (4)



Map assembled for printing at 1:15,000, at size of 22 x 34 inches

Base map is excerpts from  
USGS 7.5 minute Quadrangles  
Española & Horcado Ranch, NM,  
rendered in National Geographic  
TOPO! Software

US Department of Interior,  
Bureau of Indian Affairs,  
Southwest Regional Office,  
Albuquerque, NM,  
September 2013