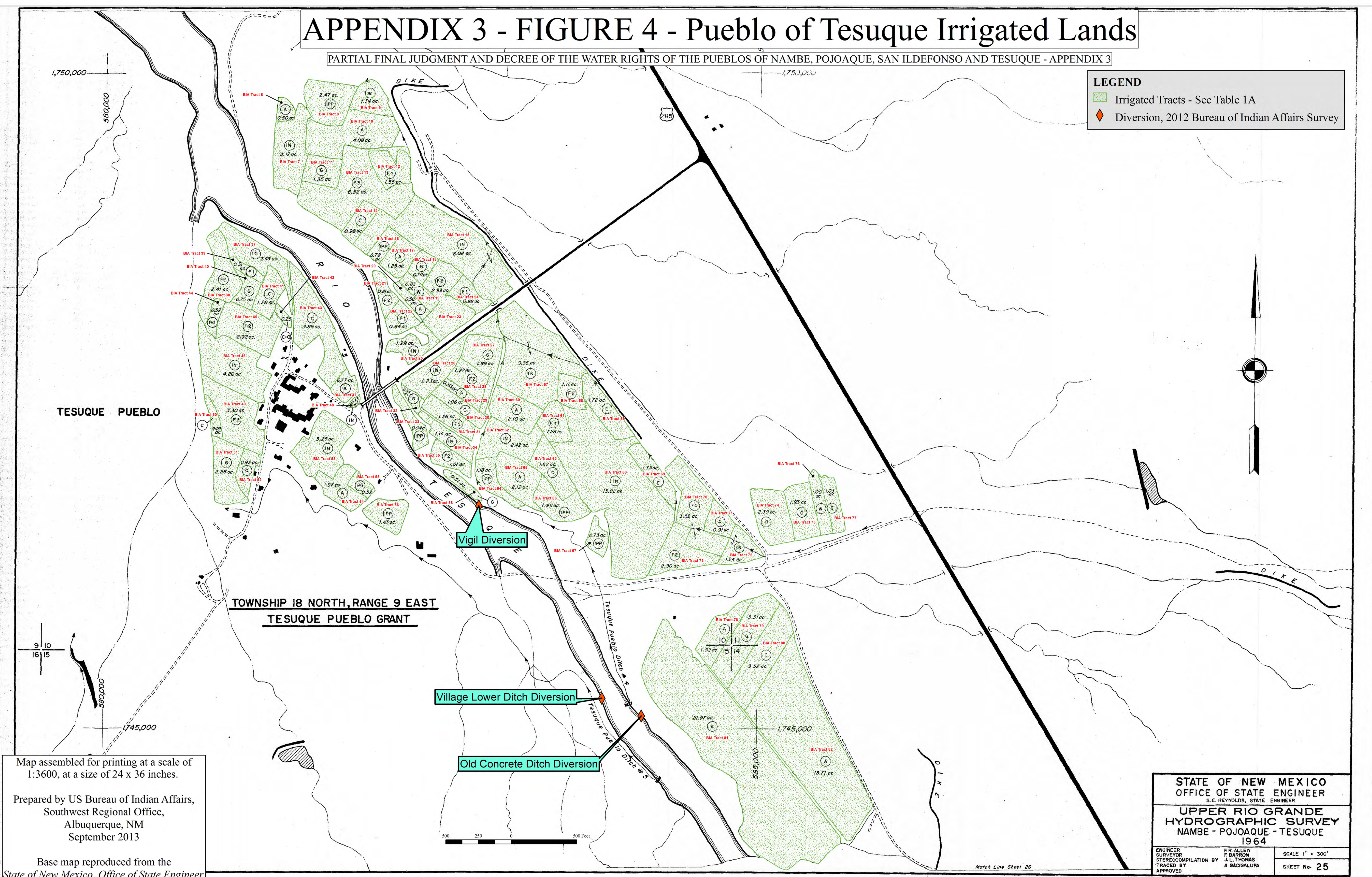


# APPENDIX 3 - FIGURE 4 - Pueblo of Tesuque Irrigated Lands

PARTIAL FINAL JUDGMENT AND DECREE OF THE WATER RIGHTS OF THE PUEBLOS OF NAMBE, POJOAQUE, SAN ILDEFONSO AND TESUQUE - APPENDIX 3

**LEGEND**

- Irrigated Tracts - See Table 1A
- Diversion, 2012 Bureau of Indian Affairs Survey



Map assembled for printing at a scale of 1:3600, at a size of 24 x 36 inches.  
 Prepared by US Bureau of Indian Affairs,  
 Southwest Regional Office,  
 Albuquerque, NM  
 September 2013

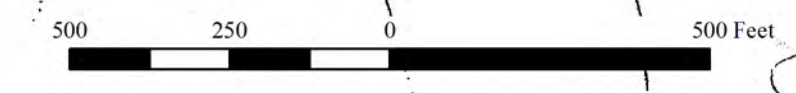
Base map reproduced from the  
 State of New Mexico, Office of State Engineer,  
 Upper Rio Grande Hydrographic Survey,  
 Nambé - Pojoaque - Tesuque, 1964.

STATE OF NEW MEXICO  
 OFFICE OF STATE ENGINEER  
 S. E. REYNOLDS, STATE ENGINEER

UPPER RIO GRANDE  
 HYDROGRAPHIC SURVEY  
 NAMBE - POJOAQUE - TESUQUE  
 1964

ENGINEER SURVEYOR STEREOCOMPILATION BY TRACED BY APPROVED  
 F. R. ALLEN  
 F. BARRON  
 J. L. THOMAS  
 A. BACIGALUPA

SCALE 1" = 300'  
 SHEET No. 25



March Line Sheet 26