
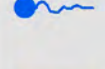


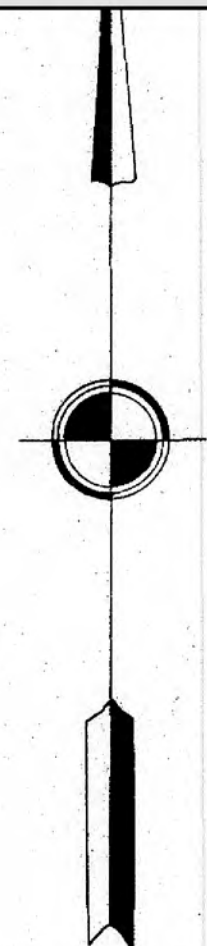
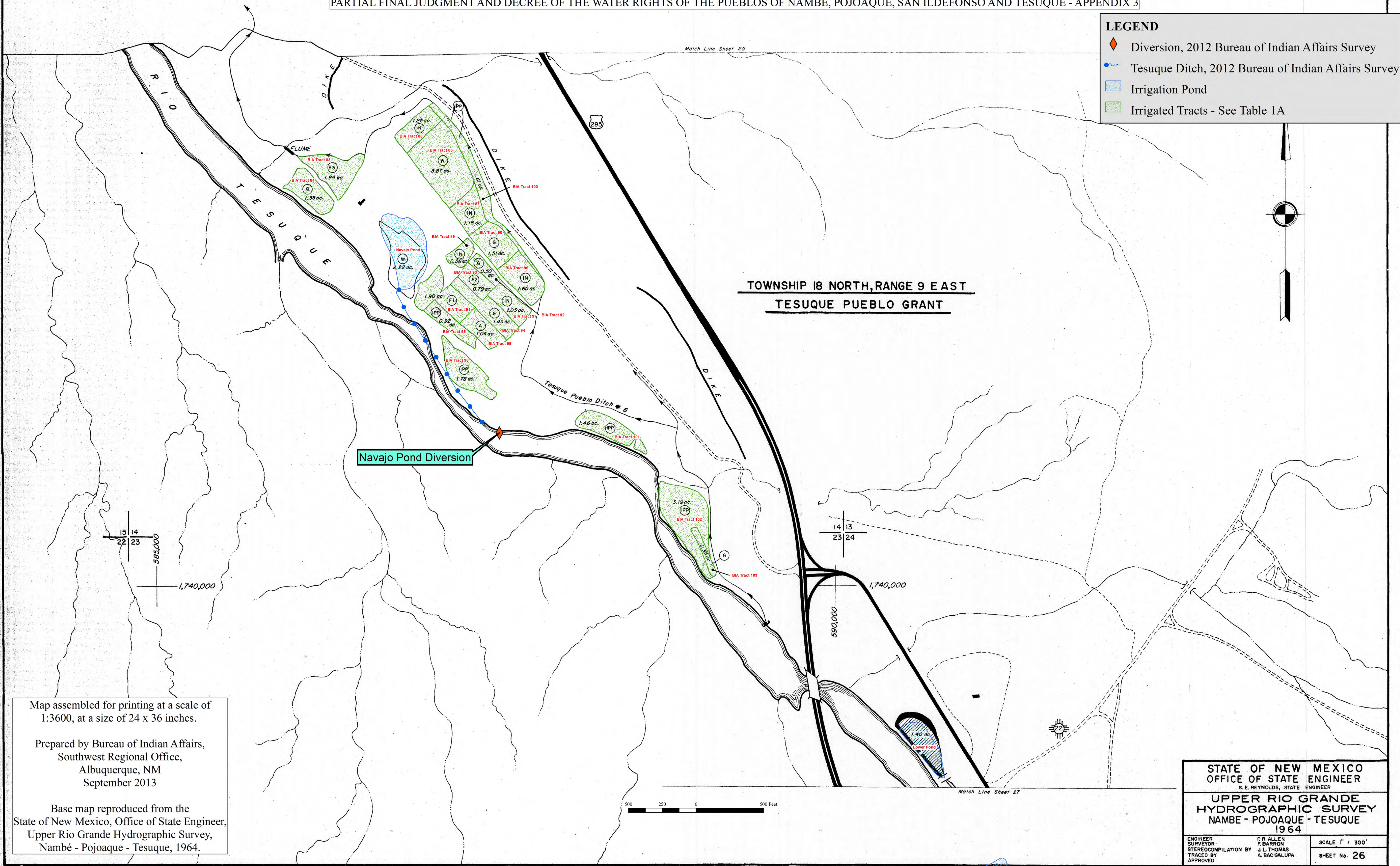


APPENDIX 3 - FIGURE 5 - Pueblo of Tesuque Irrigated Lands

PARTIAL FINAL JUDGMENT AND DECREE OF THE WATER RIGHTS OF THE PUEBLOS OF NAMBE, POJOAQUE, SAN ILDEFONSO AND TESUQUE - APPENDIX 3

LEGEND

-  Diversion, 2012 Bureau of Indian Affairs Survey
-  Tesuque Ditch, 2012 Bureau of Indian Affairs Survey
-  Irrigation Pond
-  Irrigated Tracts - See Table 1A



**TOWNSHIP 18 NORTH, RANGE 9 EAST
TESUQUE PUEBLO GRANT**

Navajo Pond Diversion

15 14
22 23
595,000
1,740,000

14 13
23 24
1,740,000
590,000

500 250 0 500 Feet

Map assembled for printing at a scale of 1:3600, at a size of 24 x 36 inches.

Prepared by Bureau of Indian Affairs,
Southwest Regional Office,
Albuquerque, NM
September 2013

Base map reproduced from the
State of New Mexico, Office of State Engineer,
Upper Rio Grande Hydrographic Survey,
Nambé - Pojoaque - Tesuque, 1964.

**STATE OF NEW MEXICO
OFFICE OF STATE ENGINEER**
S. E. REYNOLDS, STATE ENGINEER

**UPPER RIO GRANDE
HYDROGRAPHIC SURVEY
NAMBE - POJOAQUE - TESUQUE
1964**

ENGINEER SURVEYOR STEREOPLOTTING BY TRACED BY APPROVED	F. R. ALLEN F. BARRON J. L. THOMAS A. BACIGALUPA	SCALE 1" = 300' SHEET No. 26
--	---	---------------------------------