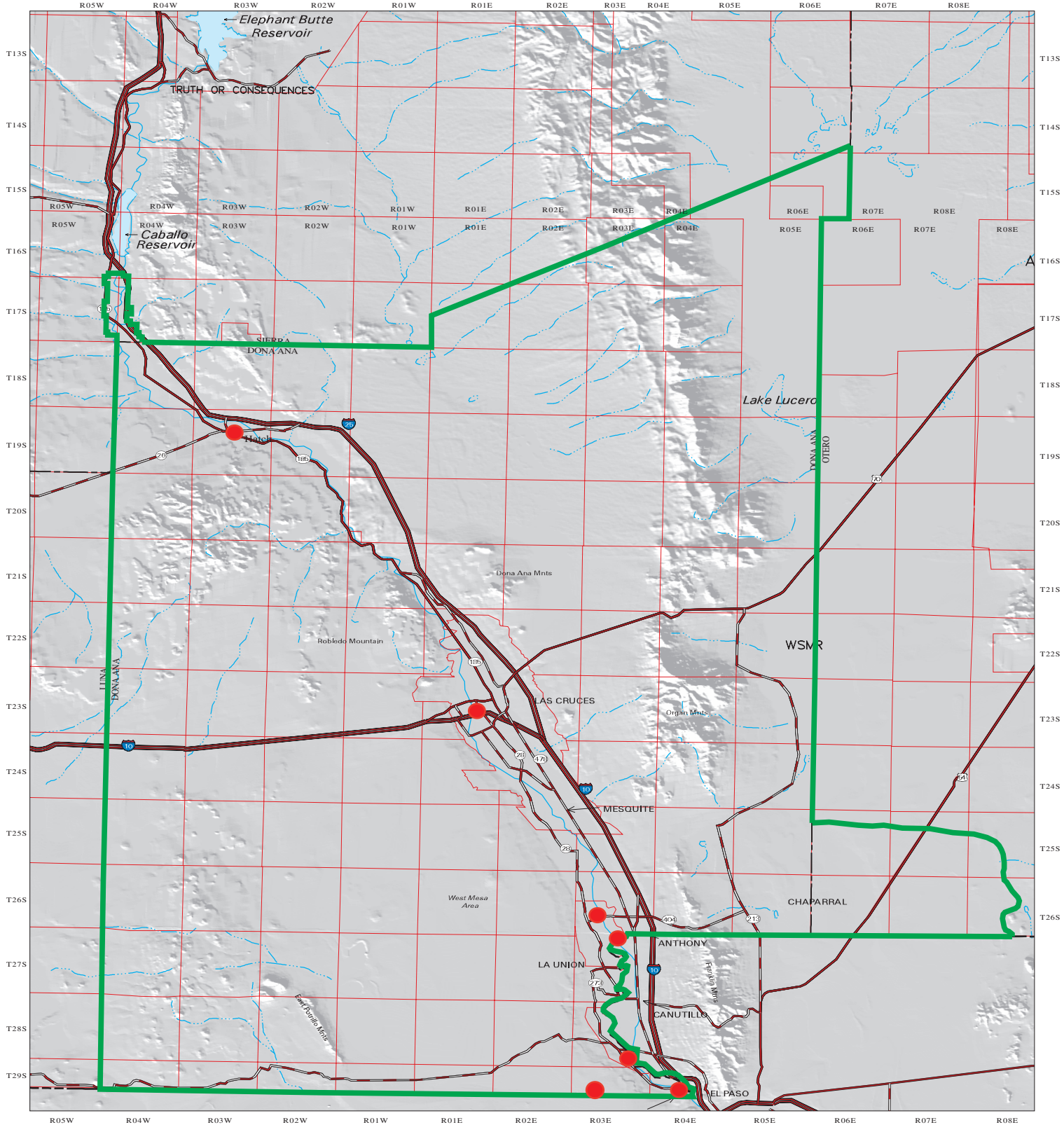


# Lower Rio Grande Water Users Organization

## Figure 6.11 Waste Water Treatment Plant Location Map



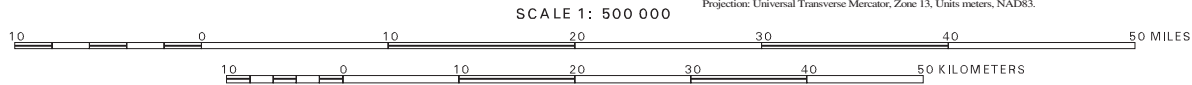
- |  |   |
|--|---|
| <p><b>Explanation</b></p> <ul style="list-style-type: none"> <li> State Line</li> <li> County Line</li> <li> Perennial Stream/River</li> <li> Intermittent Stream</li> <li> Interstate</li> <li> U.S. Highway</li> </ul> | <ul style="list-style-type: none"> <li> State/Other Highway</li> <li> Township/Range</li> <li> Planning Region</li> <li> Waste Water Treatment Plant</li> </ul> |
|--|---|

Produced by New Mexico Water Resources Research Institute, December 2000  
 Base map prepared by the U.S. Geological Survey

Compiled from digital data provided by the New Mexico Resource Geographic Information System Program (RGIS). Original base maps digitized from 1:500,000 mylar sheets and 100,000 paper maps for New Mexico. These data meet National Mapping Accuracy Standards for 1:500,000 and 1:100,000 scale maps. Boundary of the Lower Rio Grande Water User Organization Water Planning Region is based on the New Mexico county boundaries and the EBID boundary in Sierra County.

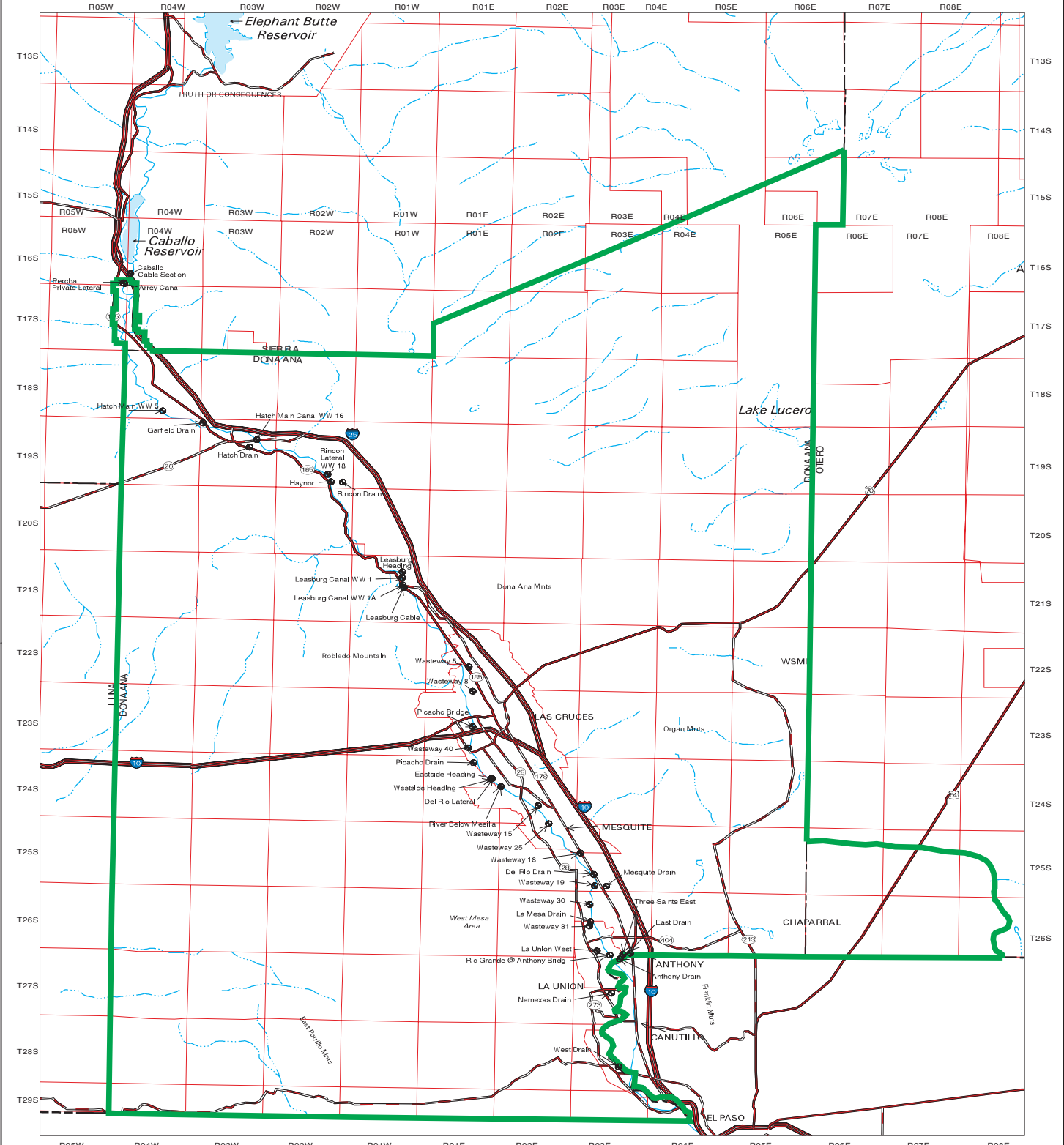
Horizontal accuracy: At the scale of 1:500,000 at least 90 percent of the points tested are within 1/30th inch (0.0333 inch), or within 423 ground meters, of their true location.

Projection: Universal Transverse Mercator, Zone 13, Units meters, NAD83.



# Lower Rio Grande Water Users Organization

## Figure 6.12 Stream Gage Locations Map



- |   |                        |   |                     |
|---|------------------------|---|---------------------|
| ○ | Gaging Station         | — | U.S. Highway        |
| — | State Line             | — | State/Other Highway |
| — | County Line            | — | Township/Range      |
| — | Perennial Stream/River | — | Planning Region     |
| — | Intermittent Stream    |   |                     |
| — | Interstate             |   |                     |

Produced by New Mexico Water Resources Research Institute, August 2002  
 Base map prepared by the U.S. Geological Survey

Compiled from digital data provided by the New Mexico Resources Geographic Information System Program (GIS). Original base maps digitized from 1:500,000 meter sheets and 100,000 paper maps for New Mexico. These data meet National Mapping Accuracy Standards for 1:500,000 and 1:100,000 scale maps. Gaging station locations derived from published data and from data provided by the Elephant Butte Irrigation District. Boundary of the Lower Rio Grande Water Users Organization Water Planning Regions based on the New Mexico county boundaries and the EBD boundary in Sierra County.

Horizontal accuracy: At the scale of 1:500,000 at least 90 percent of the points tested are within 1/320th inch (0.0333 inch), or within 423 ground meters, of their true location.

Projected on Universal Transverse Mercator, Zone 13, Units meters, NAD83.

SCALE 1: 500 000

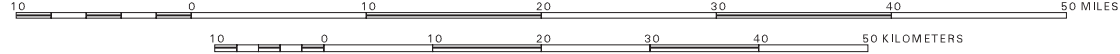
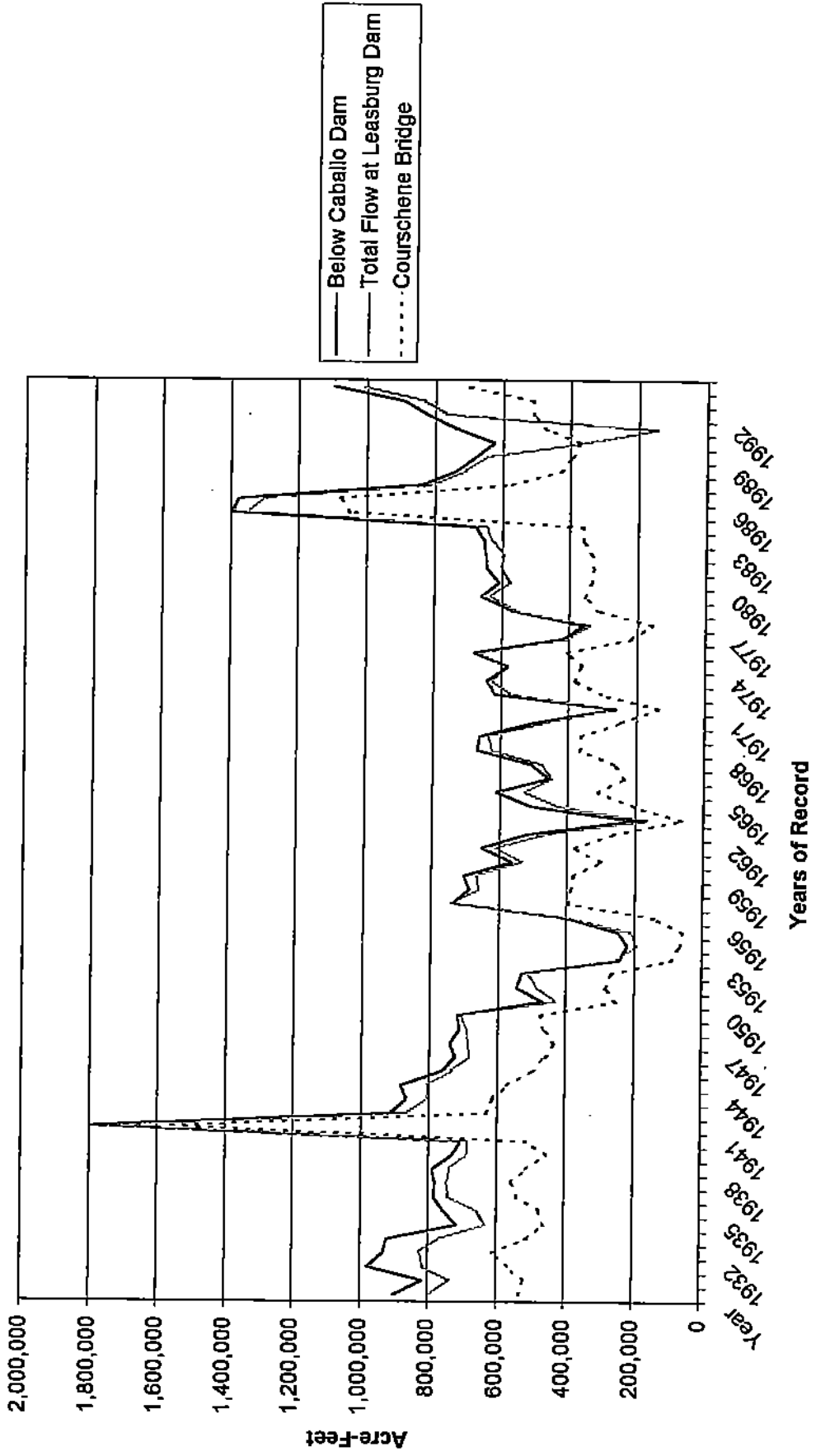


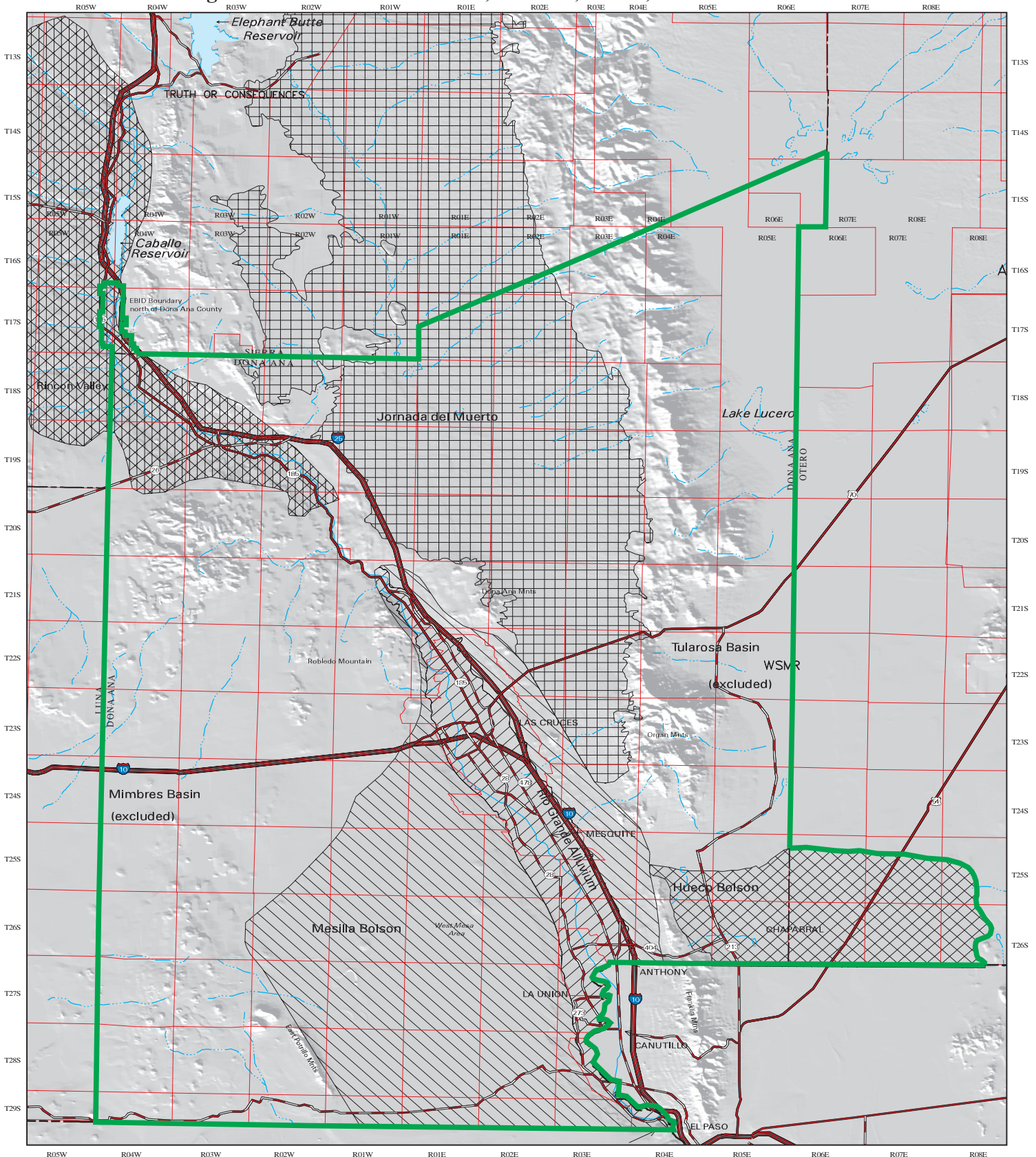
Figure 6.13

**Annual Rio Grande Flows At Major Gauge Stations  
1930 to 1995**



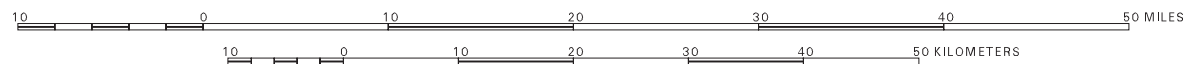
# Lower Rio Grande Water Users Organization

## Figure 6.14 Location of Mesilla, Jornada, Hueco, and Rincon Basins.



- |   |  |
|---|--|
| <p>Explanation</p> <ul style="list-style-type: none"> <li> State Line</li> <li> County Line</li> <li> Perennial Stream/River</li> <li> Intermittent Stream</li> <li> Interstate</li> <li> U.S. Highway</li> </ul> | <ul style="list-style-type: none"> <li> State/Other Highway</li> <li> Township/Range Planning Region</li> <li> Jornada del Muerto</li> <li> Mesilla Bolson</li> <li> Rio Grande Alluvium</li> <li> Hueco Bolson</li> <li> Rincon Valley Basin</li> </ul> |
|---|--|

SCALE 1: 500 000



Produced by New Mexico Water Resources Research Institute, December 2000

Base map prepared by the U.S. Geological Survey

Compiled from digital data provided by the New Mexico Resource Geographic Information System Program (RGIS). Original base maps digitized from 1:500,000 mylar sheets and 100,000 paper maps for New Mexico. These data meets National Mapping Accuracy Standards for 1:500,000 and 1:100,000 scale maps. Shaded relief provided by RGIS and is based on 1:250,000 Digital Elevation Models (DEMs) created by the U.S. Geological Survey. Boundary of the Lower Rio Grande Water Users Organization Water Planning Region is based on the New Mexico county boundaries and the EBD boundary in Sierra County.

Horizontal accuracy: At the scale of 1:500,000 at least 90 percent of the points tested are within 1/300th inch (0.0333 inch), or within 423 ground meters, of their true location.

Projection: Universal Transverse Mercator, Zone 13, Units meters, NAD83.

