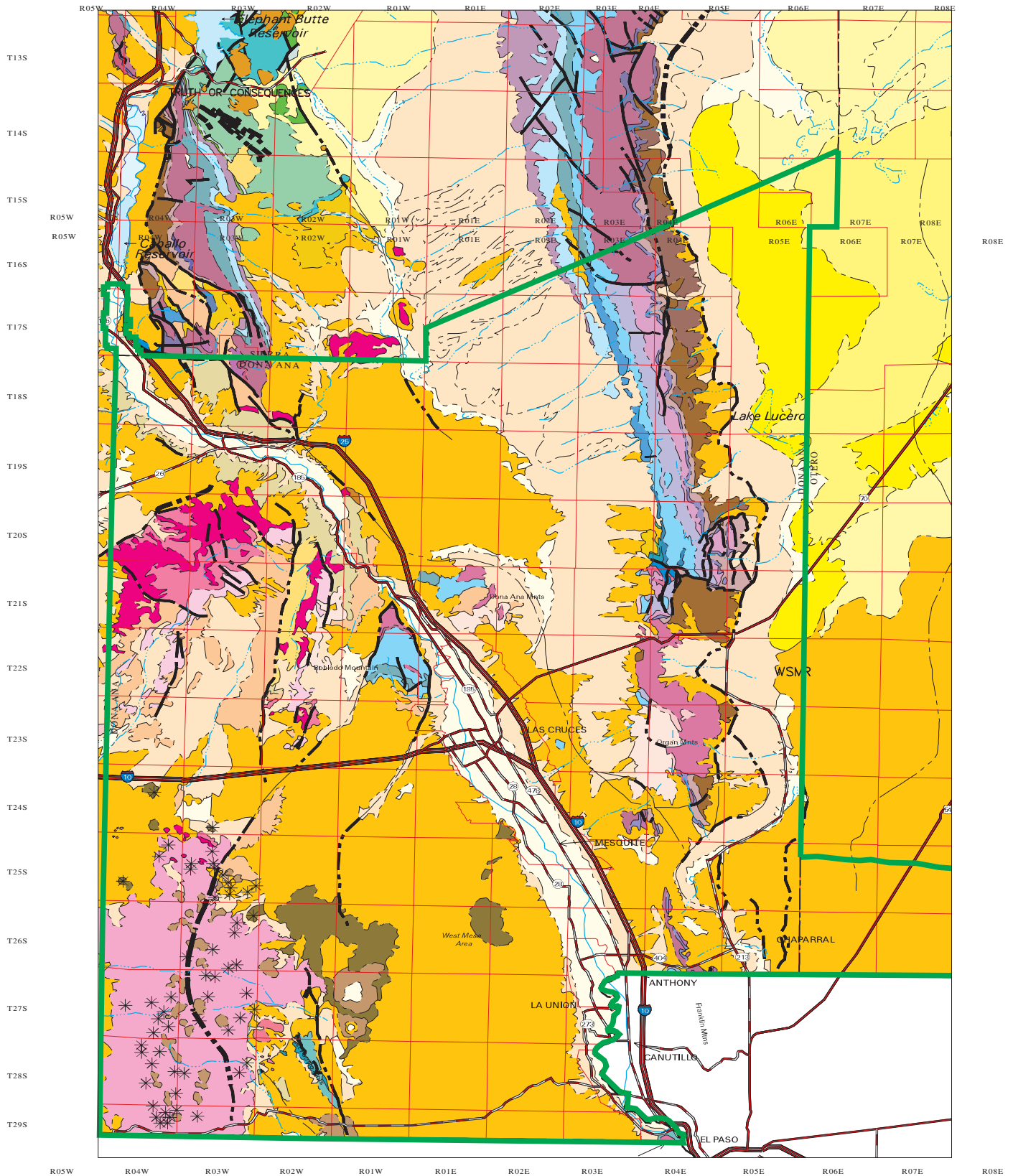


Lower Rio Grande Water Users Organization

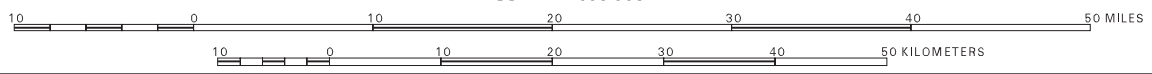
Figure 6.15 Geologic Map of Dona Ana County

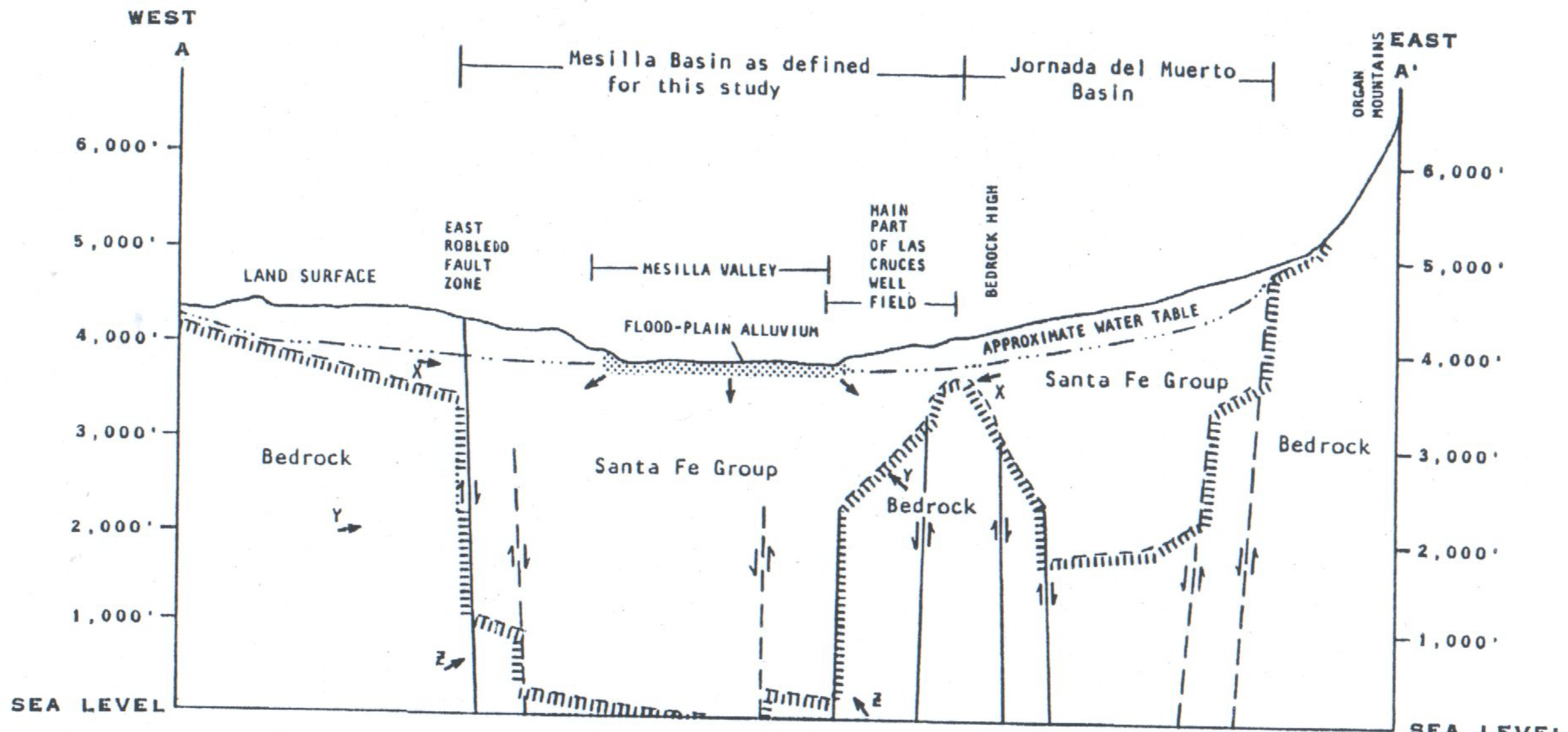


- | | | | |
|--|------------------------|--|-----------------|
| | State Line | | State Highway |
| | County Line | | Township/Range |
| | Perennial Stream/River | | Planning Region |
| | Intermittent Stream | | Volcanic Vents |
| | Interstate | | |
| | U.S. Highway | | |

Produced by New Mexico Water Resources Research Institute, December 2000
 Base map prepared by the U.S. Geological Survey
 Compiled from digital data provided by the New Mexico Resource Geographic Information System Program (RGIS). Original base maps digitized from 1:500,000 mylar sheets and 100,000 paper maps for New Mexico. These data meet National Mapping Accuracy Standards for 1:500,000 and 1:100,000 scale maps. Surface geology provided by Green and Jones 1997, open file report 97-52.
 Horizontal accuracy: At the scale of 1:500,000 at least 90 percent of the points tested are within 1/30th inch (0.0333 inch), or within 423 ground meters, of their true location.
 Projection: Universal Transverse Mercator, Zone 13, Units meters, NAD83.

SCALE 1: 500 000





Modified from Hawley (1984, pl. 5)

0 1 2 3 4 5 MILES
 0 1 2 3 4 5 KILOMETERS

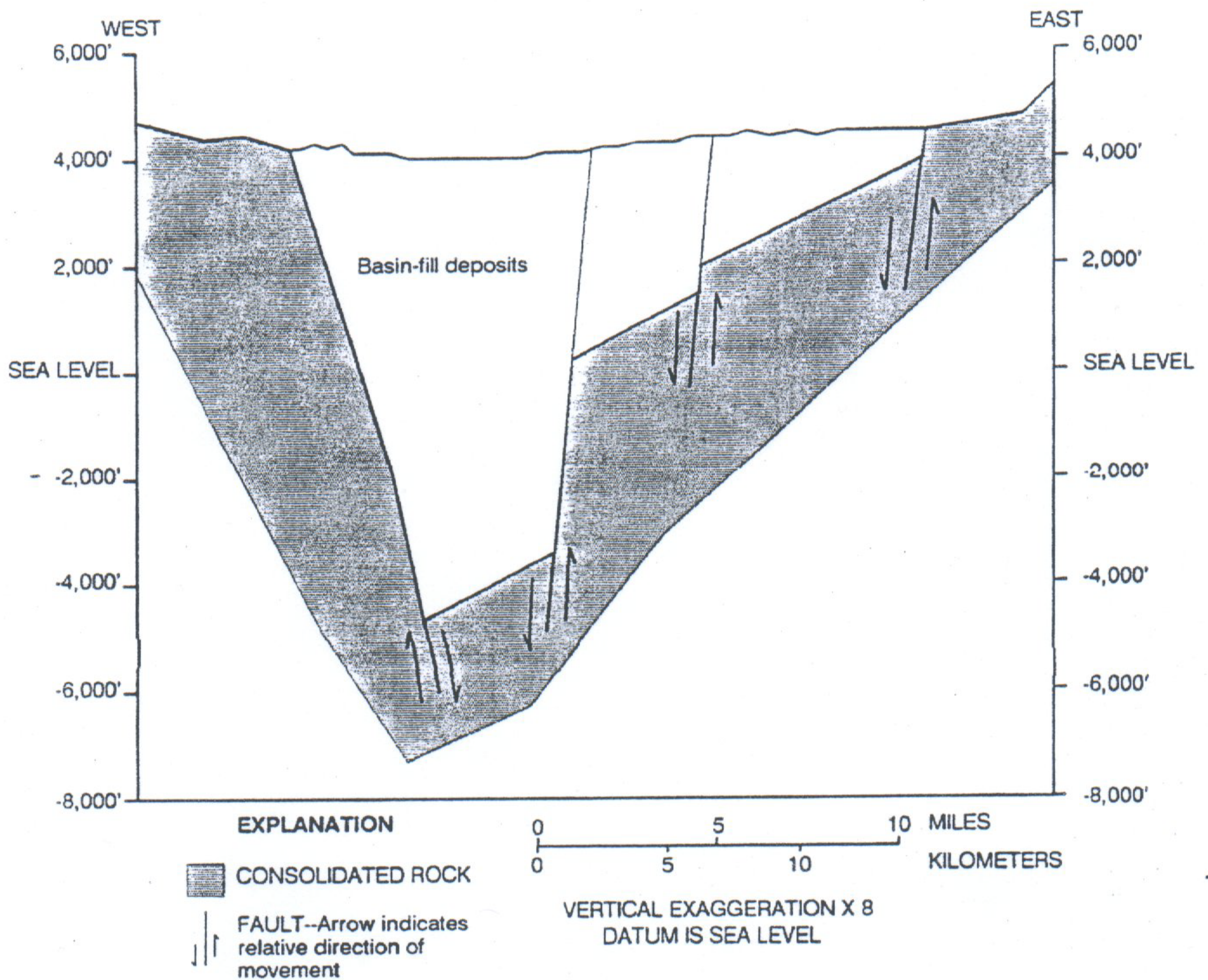
VERTICAL EXAGGERATION X 10

EXPLANATION

- ||| FAULT--Dashed where inferred. Arrows indicate direction of relative vertical movement
- ||||| APPROXIMATE CONTACT BETWEEN SANTA FE GROUP AND UNDERLYING BEDROCK
- ↘ POSSIBLE PATH OF UNDERFLOW INTO THE BASIN--X indicates flow in the Santa Fe Group; Y indicates flow partly through bedrock; Z indicates very deep flow
- ↙ POSSIBLE PATH OF FLOW FROM FLOOD-PLAIN ALLUVIUM

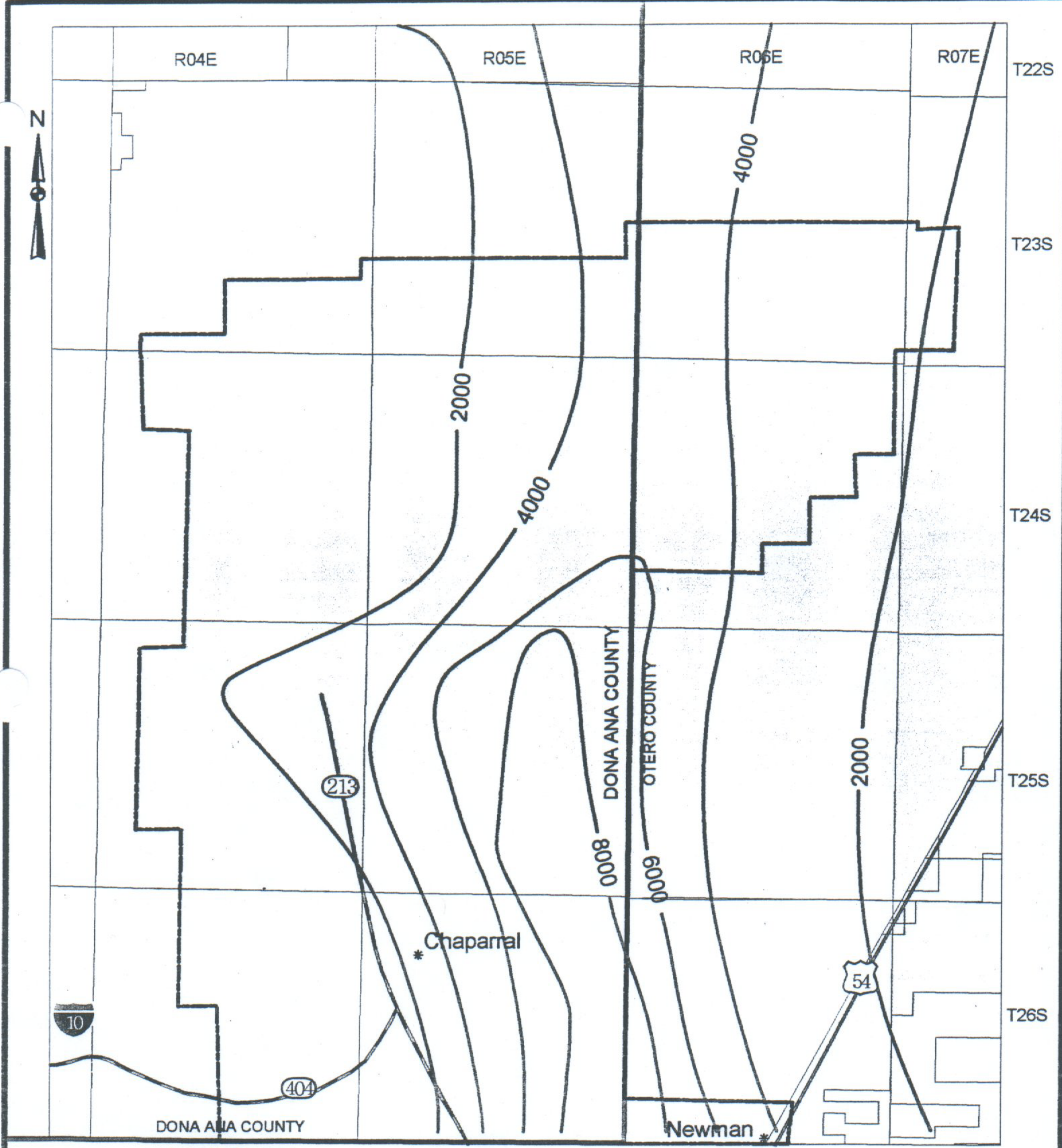
Figure 6.16 Generalized hydrogeologic cross-section across the northern part of the Mesilla Basin and the southern part of the Jornada Basin, Dona Ana County, New Mexico.

Source: Frenzel and Kashler, 1990



Source: Orr and Risser, 1992

Figure 6.18 Generalized geologic cross-section, west to east, Hueco Basin, Dona Ana County, New Mexico.



- | | | | |
|--|---------------|--|--|
| | Interstate | | Town |
| | State Highway | | Hueco Basin boundary |
| | U.S. Highway | | Military boundary |
| | | | line of equal thickness of basin-fill deposits, ft |

Source: Orr and Risser, 1992

Figure 6.19 Map showing thickness of basin-fill deposits, Hueco Basin, Dona Ana County, New Mexico.

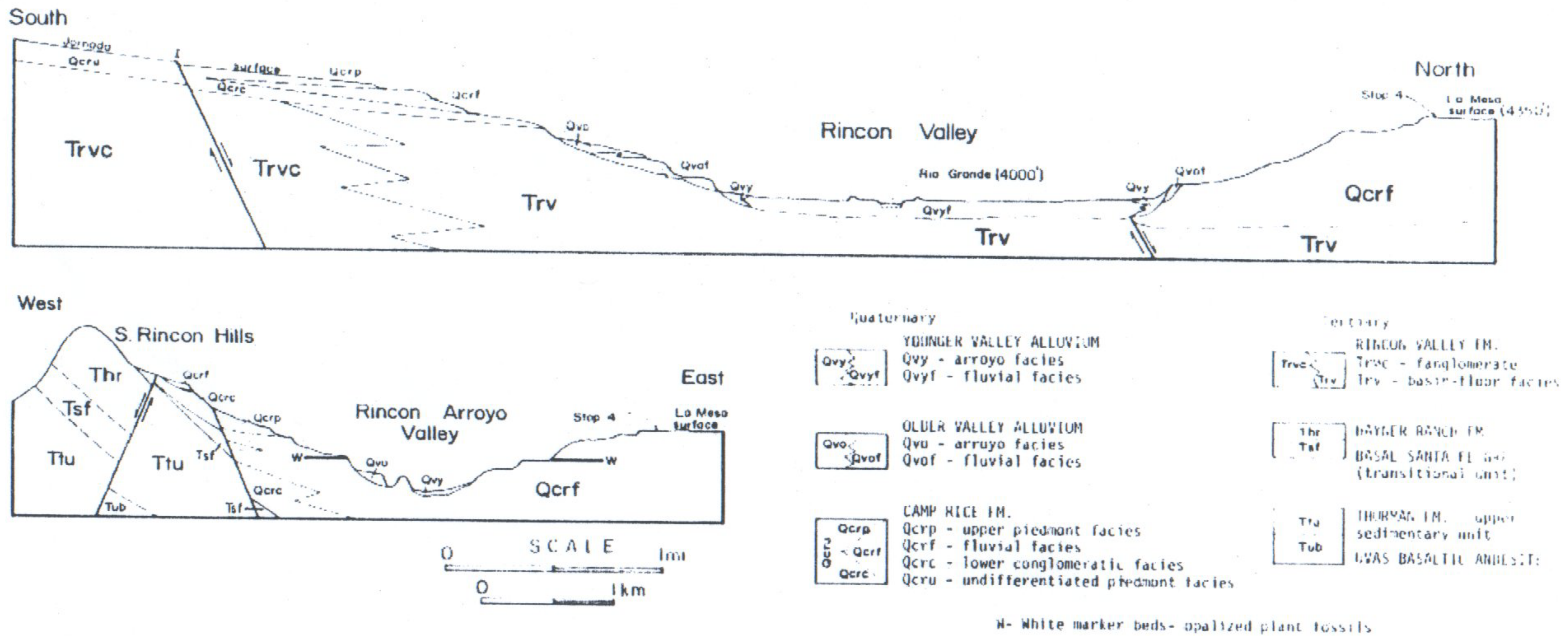


Figure 6.20 Cross-section of the Rincon Valley and Rincon Arroyo Valley, Dona Ana County, New Mexico.