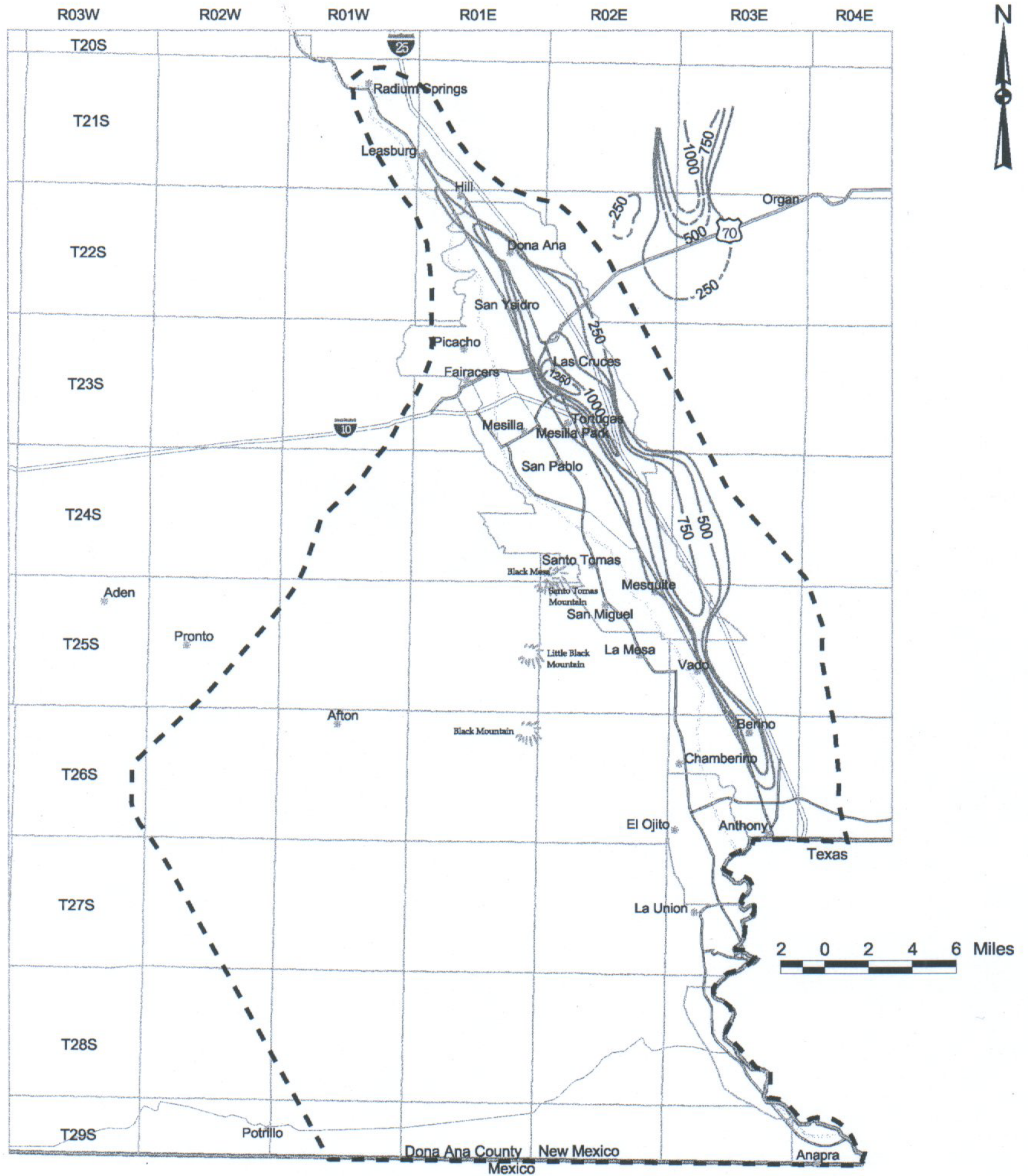


**Explanation**

- |  |  |  |            |  |                |
|--|--|--|------------|--|----------------|
|  | saturated thickness contour, ft<br>dashed where inferred |  | town       |  | basin boundary |
|  | Interstate   |  | Rio Grande |  |                |
|  | U.S. Highway   |  |            |  |                |
|  | State Highway  |  |            |  |                |

Figure 6.45 Map showing saturated thickness of lithofacies I-III containing water with a total dissolved solids concentration less than 1,000 mg/L in the Mesilla Basin, Dona Ana County, New Mexico.



**Explanation**

- |  |  |  |            |  |                |
|--|--|--|------------|--|----------------|
|  | saturated thickness contour, ft<br>dashed where inferred |  | town       |  | basin boundary |
|  | Interstate   |  | Rio Grande |  |                |
|  | U.S. Highway   |  |            |  |                |
|  | State Highway  |  |            |  |                |

Figure 6.46 Map showing saturated thickness of lithofacies V containing water with a total dissolved solids concentration less than 1,000 mg/L in the Mesilla Basin, Dona Ana County, New Mexico.

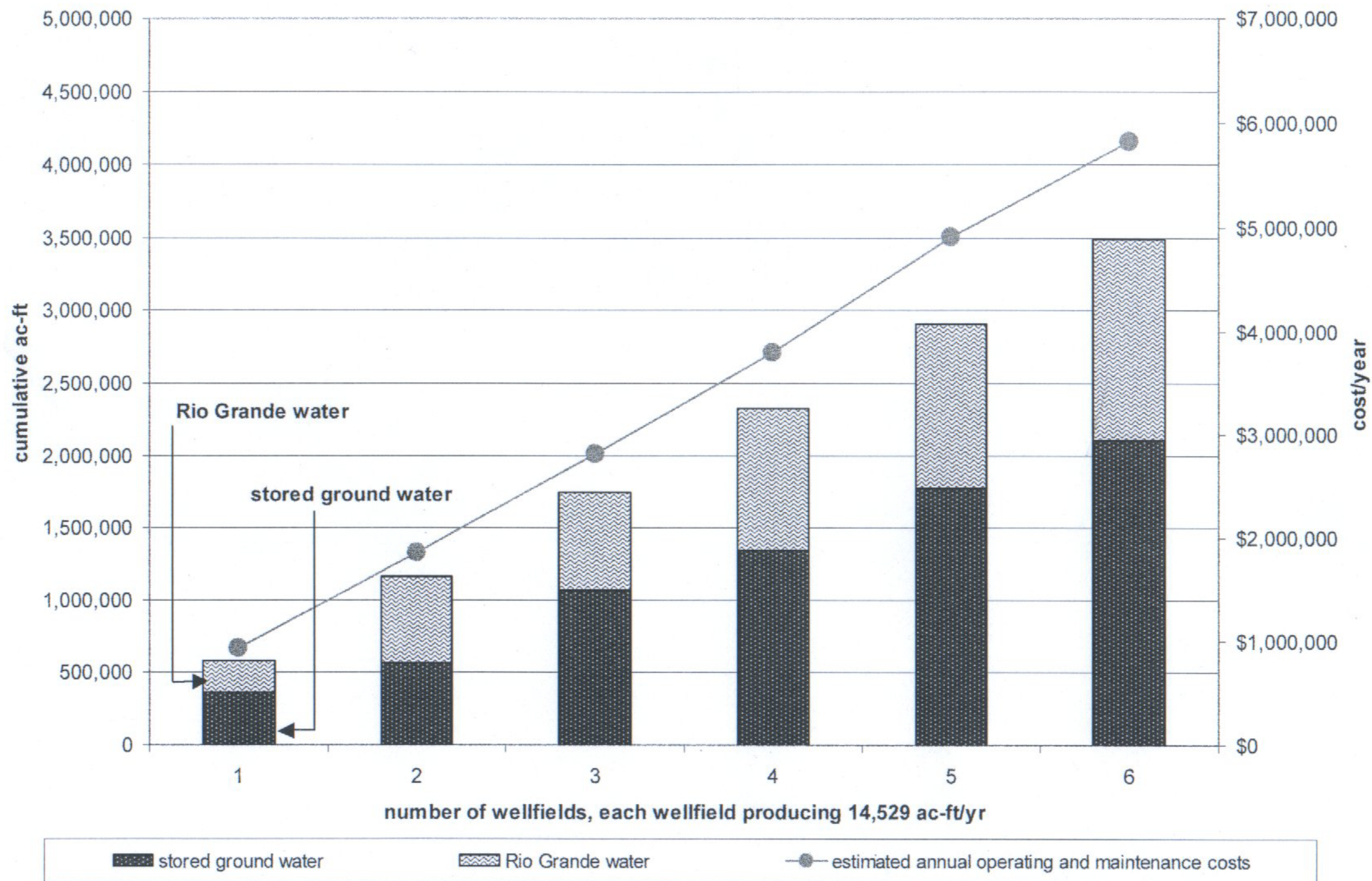


Figure 6.47 Graph showing estimated operation and maintenance costs (in 2001 dollars), simulated quantity of ground water pumped from storage, and simulated stream-flow depletion from pumping six additional well fields each at 14,529 ac-ft/yr for four years in the Mesilla Basin, Doña Ana County, New Mexico.

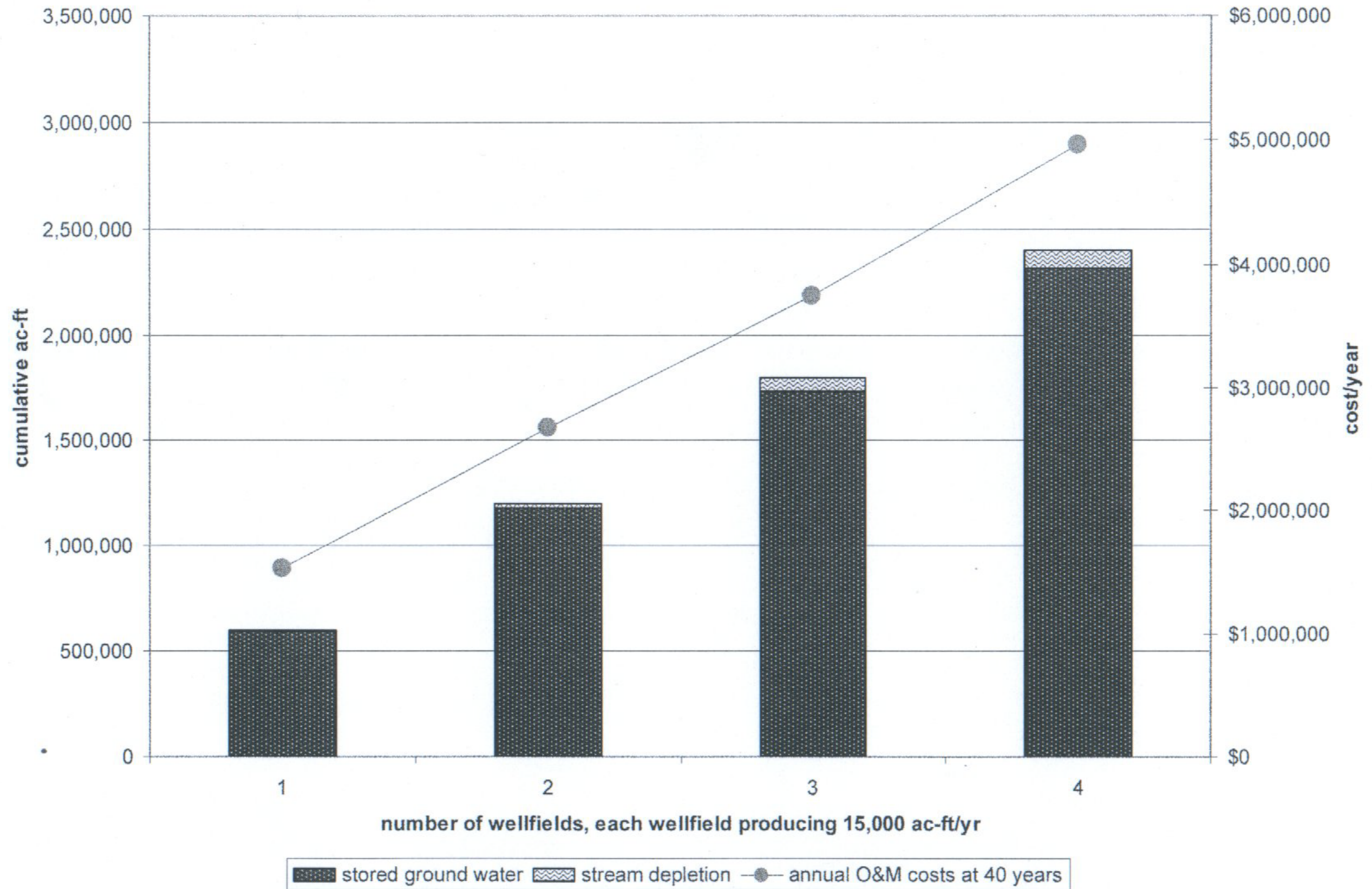


Figure 6.48 Graph showing estimated operation and maintenance costs (in 2001 dollars), simulated quantity of ground water pumped from storage, and simulated stream-flow depletion from pumping four additional well fields each at 15,000 acre-feet per year for 40 years in the Jornada Basin, Doña Ana County, New Mexico.

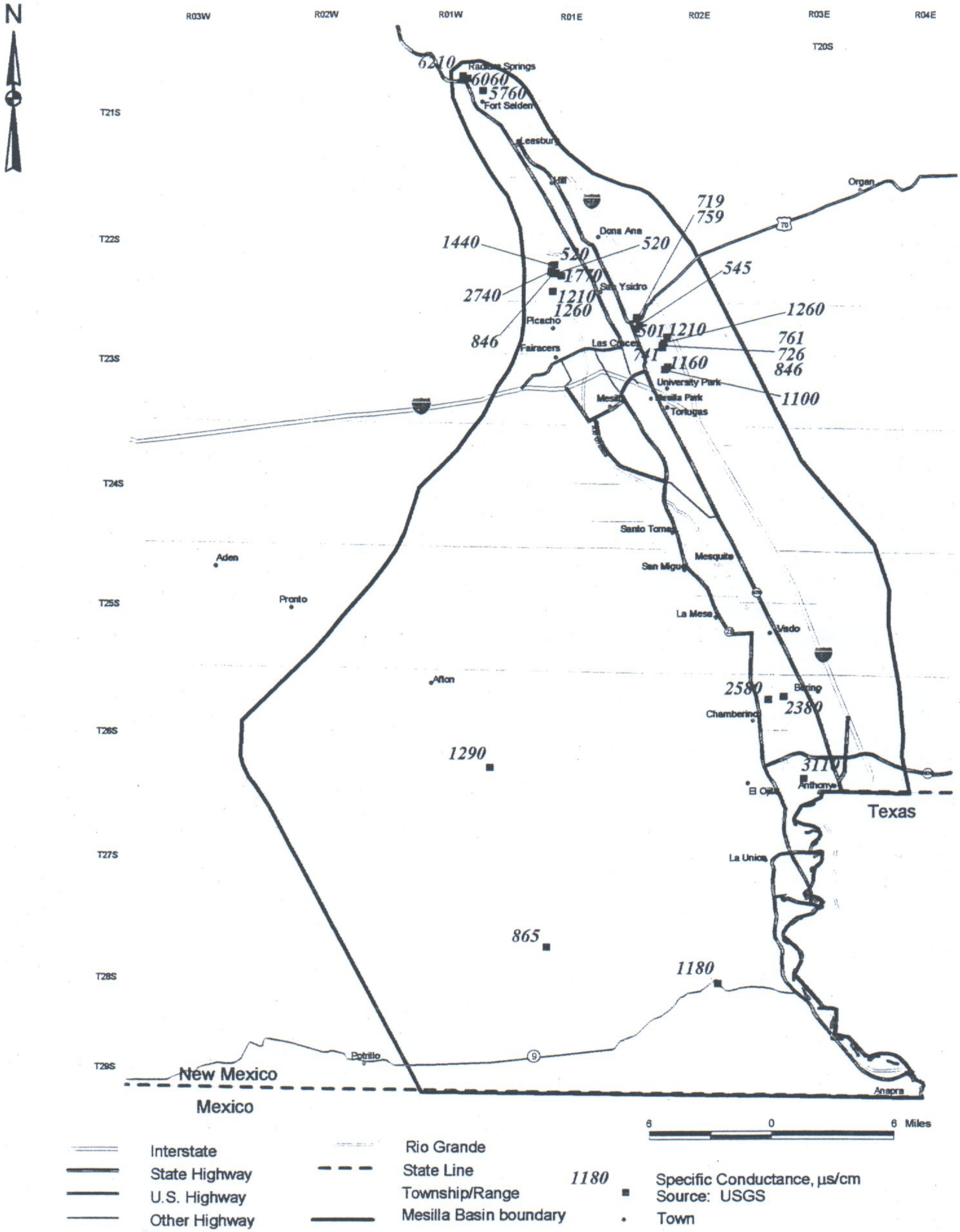


Figure 6.49 Map showing specific conductance, 1960 and before, Mesilla Basin, Dona Ana County, New Mexico. JOHN SHOMAKER & ASSOCIATES, INC.

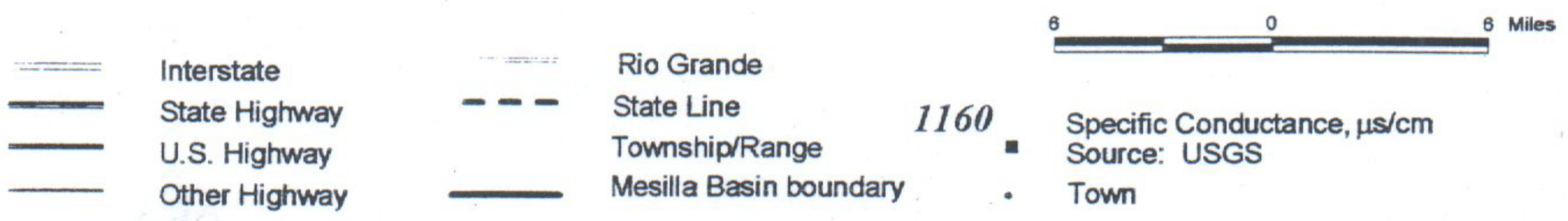
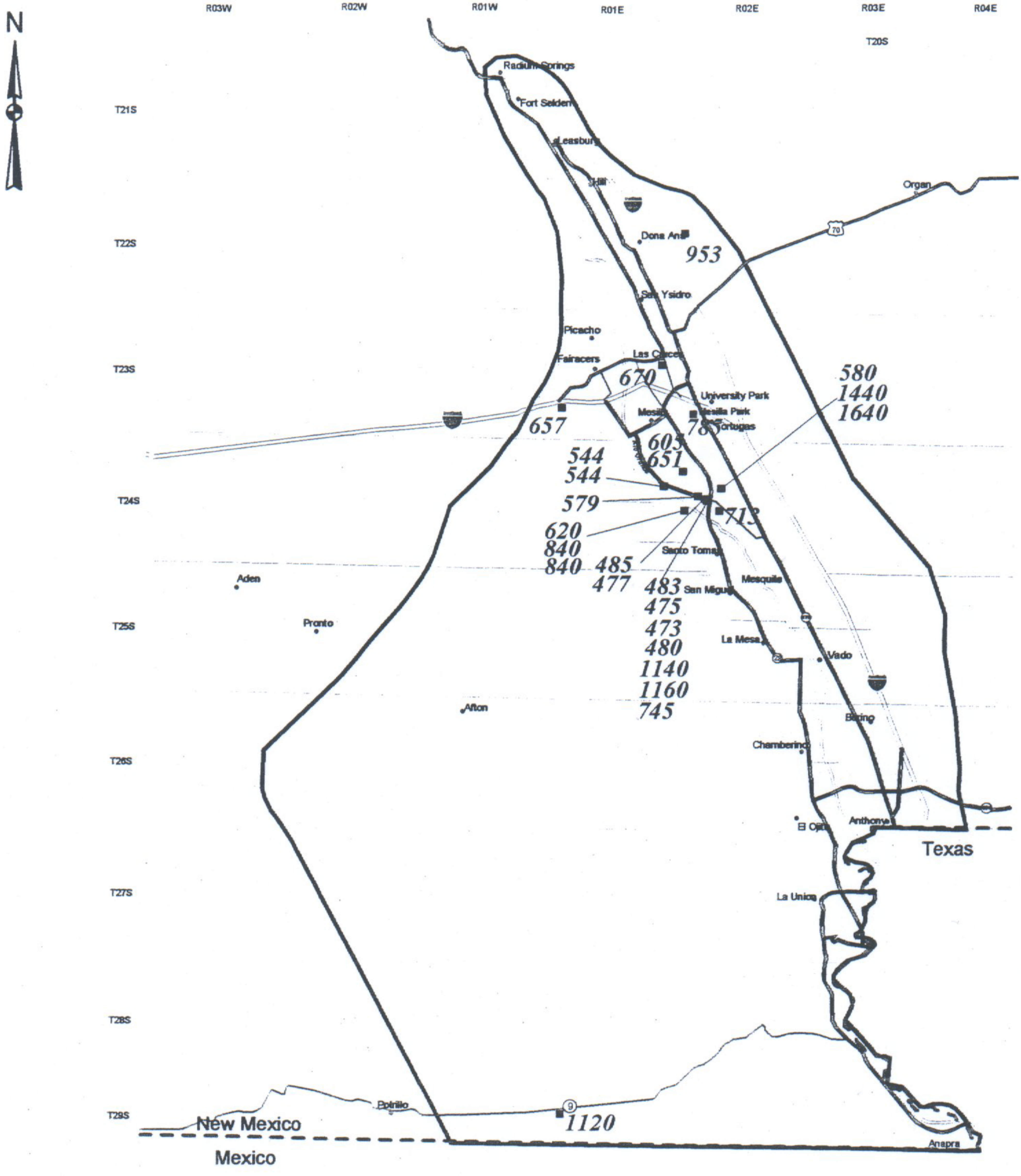


Figure 6.50 Map showing specific conductance, 1978-1983, Mesilla Basin, Dona Ana County, New Mexico.  
 JOHN SHOMAKER & ASSOCIATES, INC.