

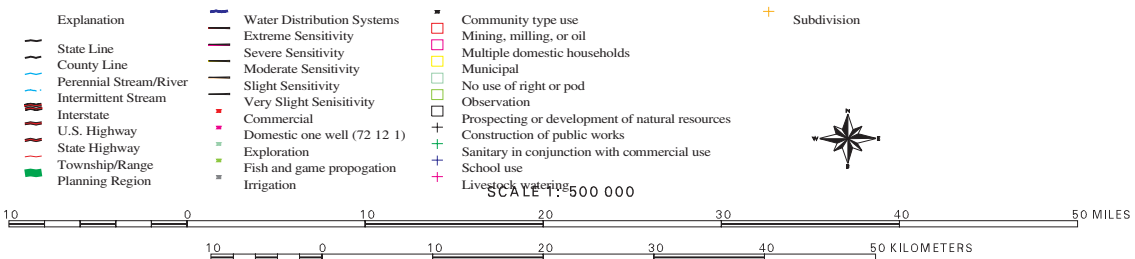
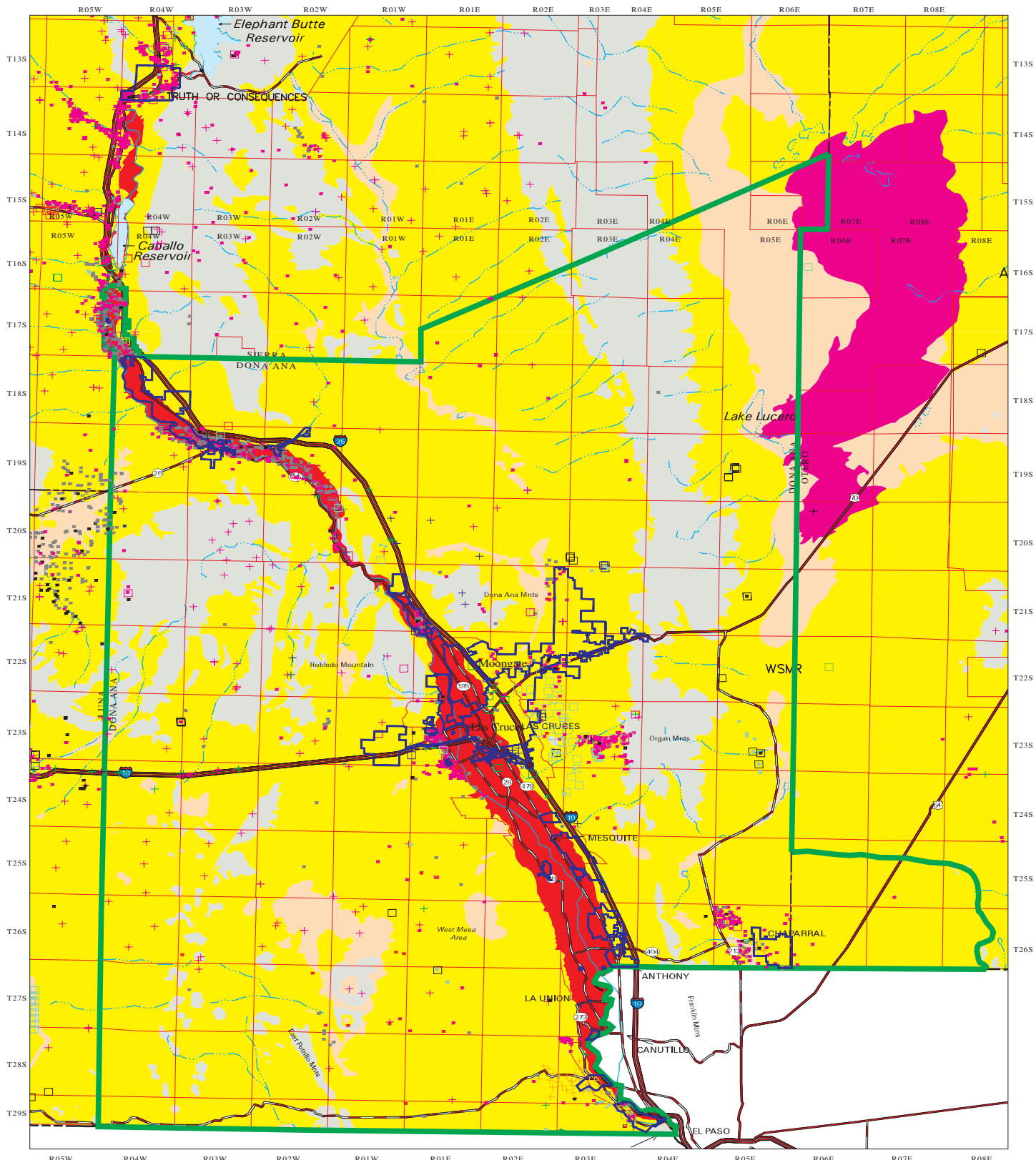
- | | | | | | |
|--|---------------|--|------------------------|-------------|---|
| | Interstate | | Rio Grande | 1120 | Specific Conductance, $\mu\text{s}/\text{cm}$
Source: USGS |
| | State Highway | | State Line | | |
| | U.S. Highway | | Township/Range | | Town |
| | Other Highway | | Mesilla Basin boundary | | |

6 0 6 Miles

Figure 6.51 Map showing specific conductance, 1995, Mesilla Basin, Dona Ana County, New Mexico.
JOHN SHOMAKER & ASSOCIATES, INC.

Lower Rio Grande Water Users Organization

Figure 6.52 Aquifer Vulnerability



Produced by New Mexico Water Resources Research Institute, August 2000

Base map prepared by the U.S. Geological Survey

Compiled from digital data provided by the New Mexico Resource Geographic Information System Program (RGIS). Original base maps digitized from 1:500,000 mylar sheets and 1:100,000 paper maps for New Mexico. These data meet National Mapping Accuracy Standards for 1:500,000 and 1:100,000 scale maps. Surface geology provided by Green and Jones, 1997, open file report 97-52. Boundary of the Sierra and Socorro Water Planning Region is based on surface drainage divides and county lines.

Horizontal accuracy: At the scale of 1:1,000,000 at least 90 percent of the points tested are within 1/30th inch (0.033 inch), or within 847 ground meters, of their true location.

Projection: Universal Transverse Mercator, Zone 13, Units meters, NAD83.

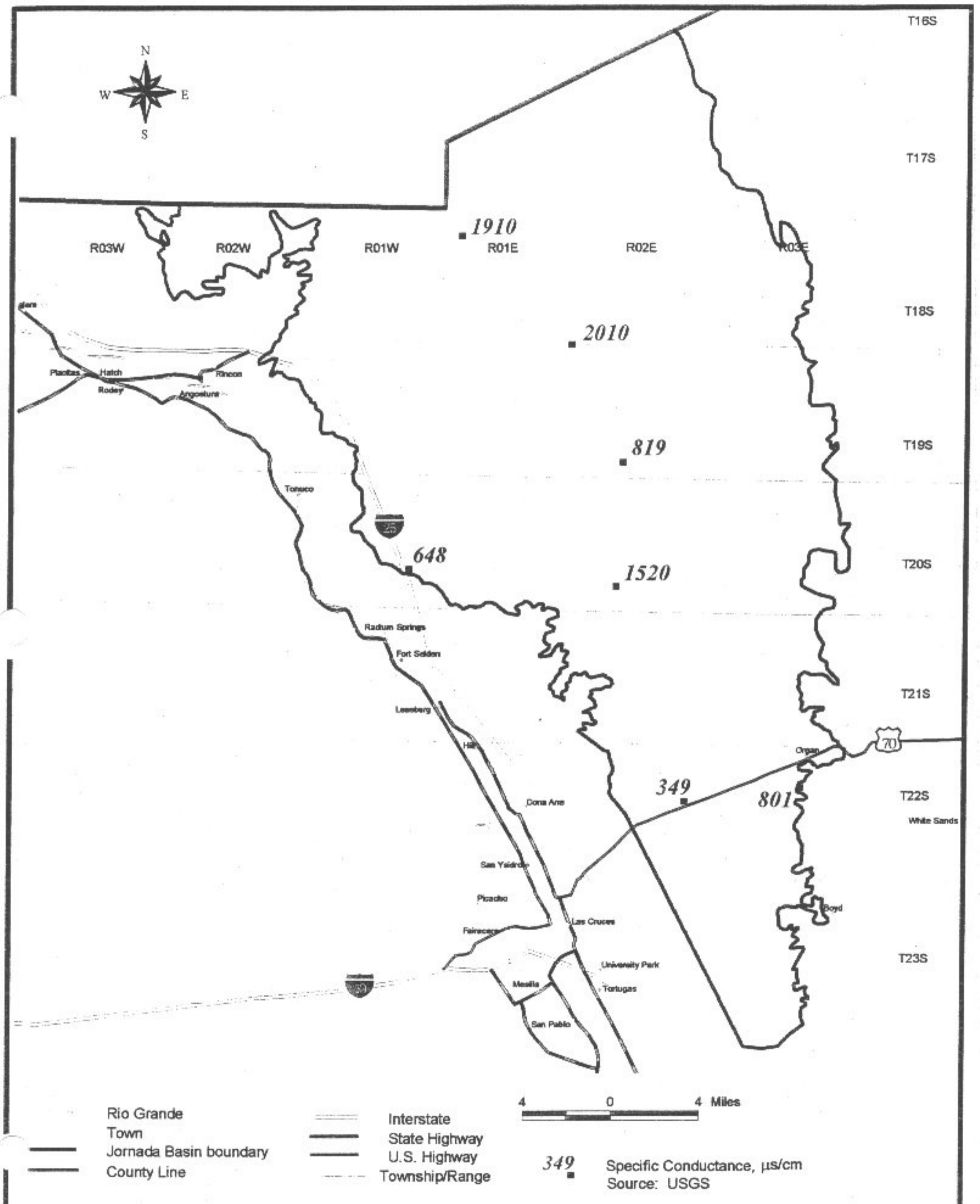


Figure 6.53 Map showing specific conductance, 1960 and before, Jornada Basin, Dona Ana County, New Mexico.

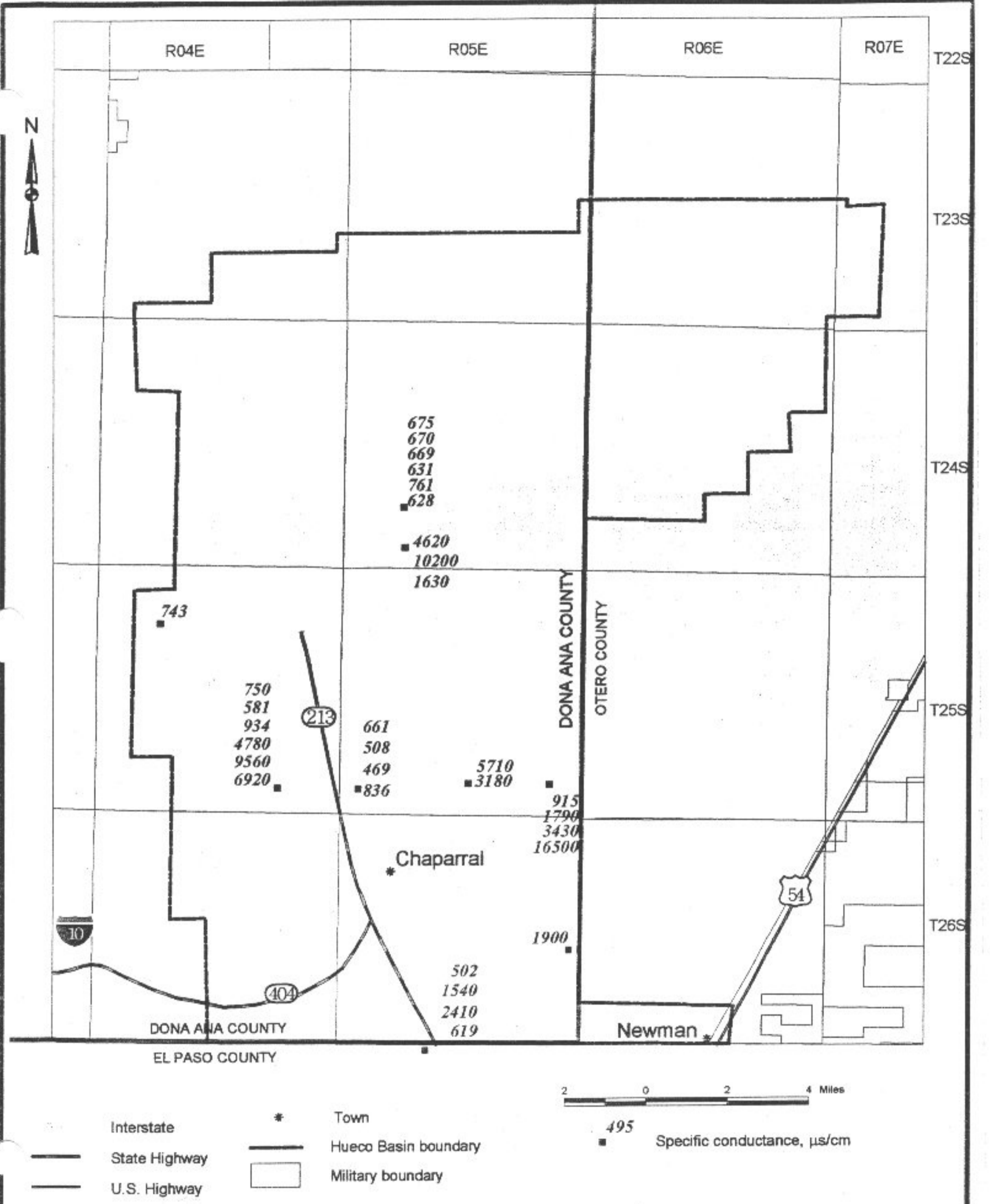
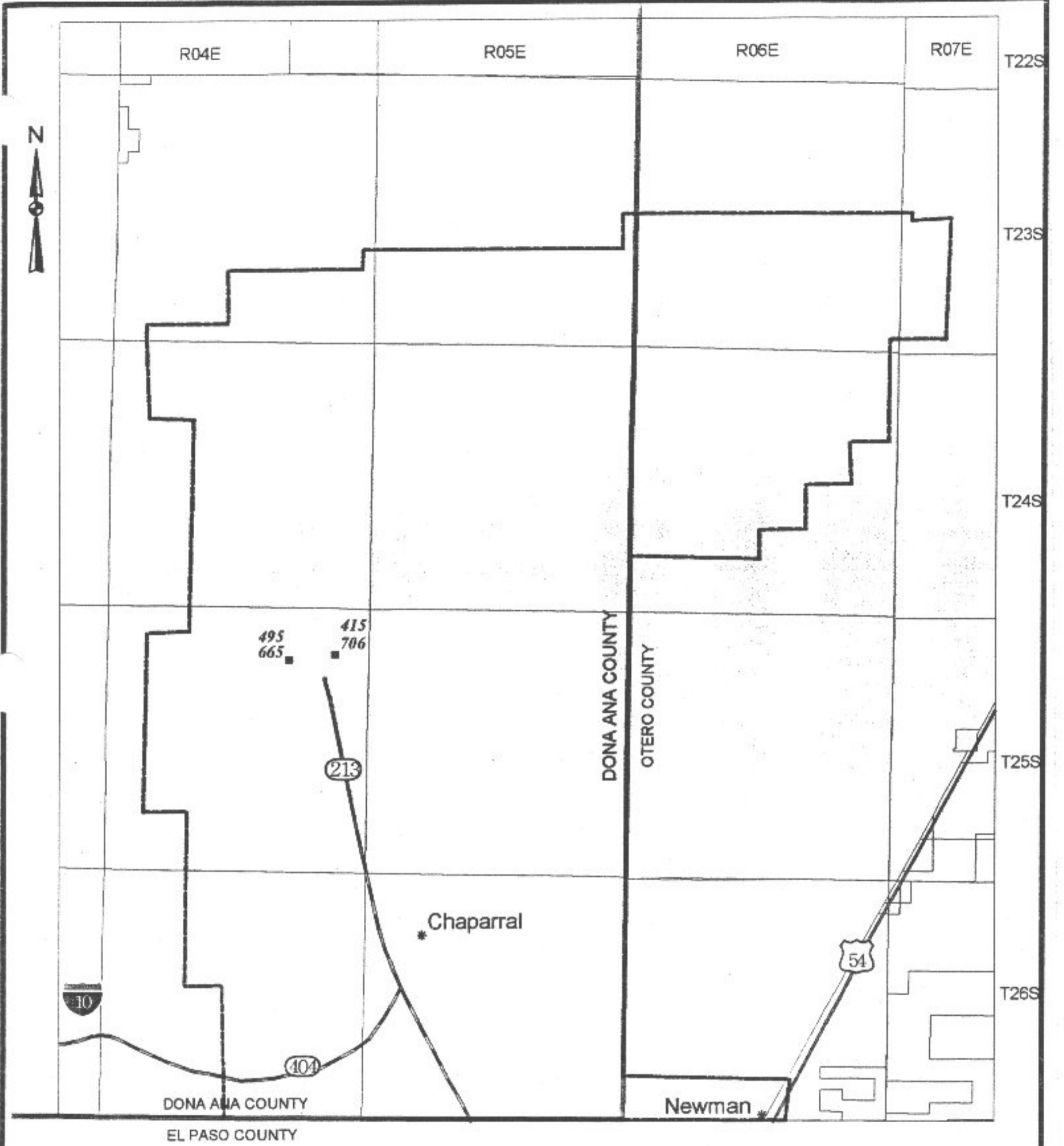


Figure 6.54 Map showing specific conductance, 1960 and before, Hueco Basin, Dona Ana County, New Mexico. JOHN SHOMAKER & ASSOCIATES, INC.



- Interstate
- State Highway
- U.S. Highway
- * Town
- Hueco Basin boundary
- Military boundary



495
 ■ Specific conductance, $\mu\text{s}/\text{cm}$

Figure 6.55 Map showing specific conductance, 1995-2000, Hueco Basin, Dona Ana County, New Mexico.
 JOHN SHOMAKER & ASSOCIATES, INC.

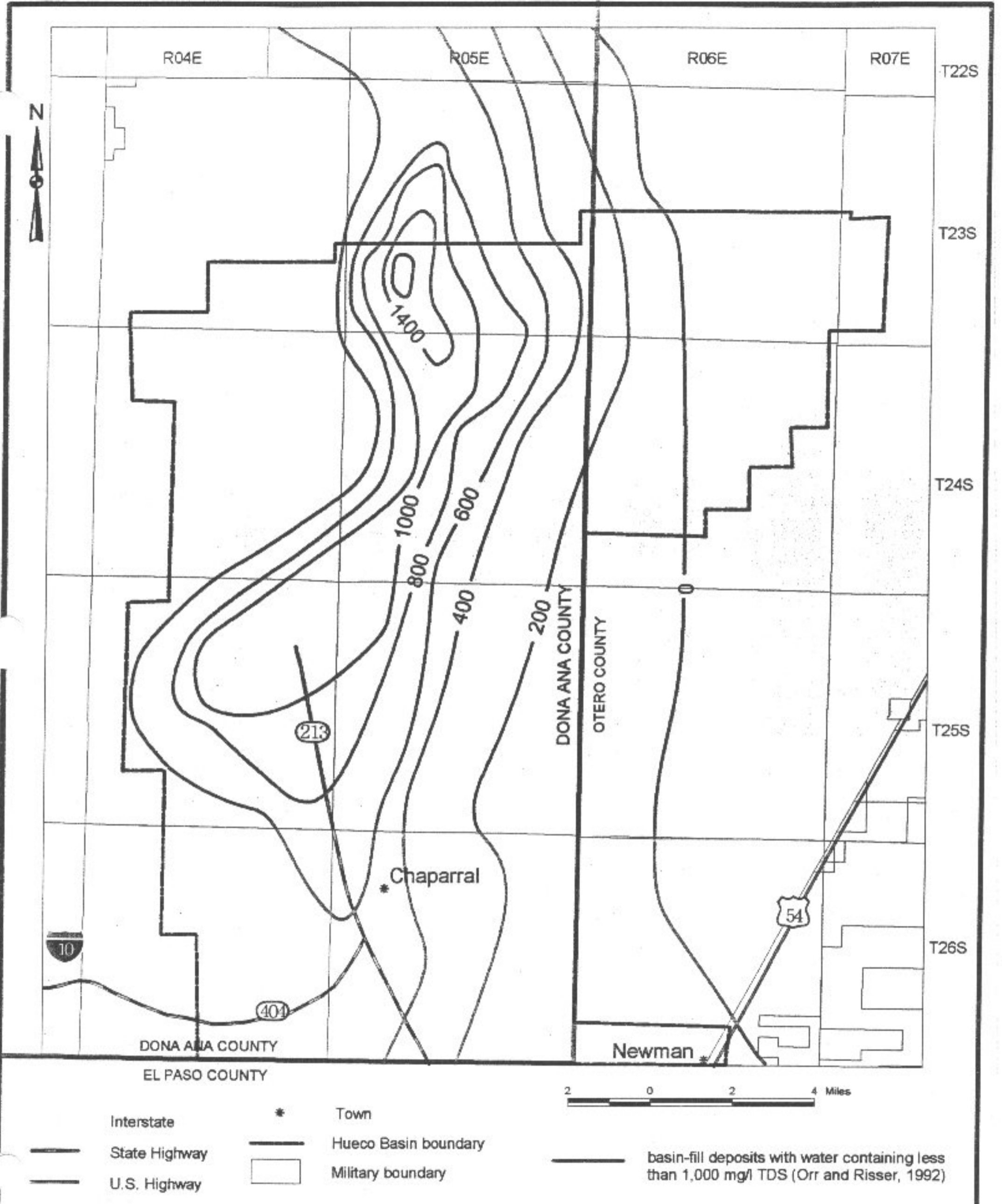


Figure 6.56 Map showing approximate thickness of basin-fill deposits that contain water having dissolved-solid concentrations less than 1,000 milligrams per liter, Hueco Basin, Dona Ana County, New Mexico.

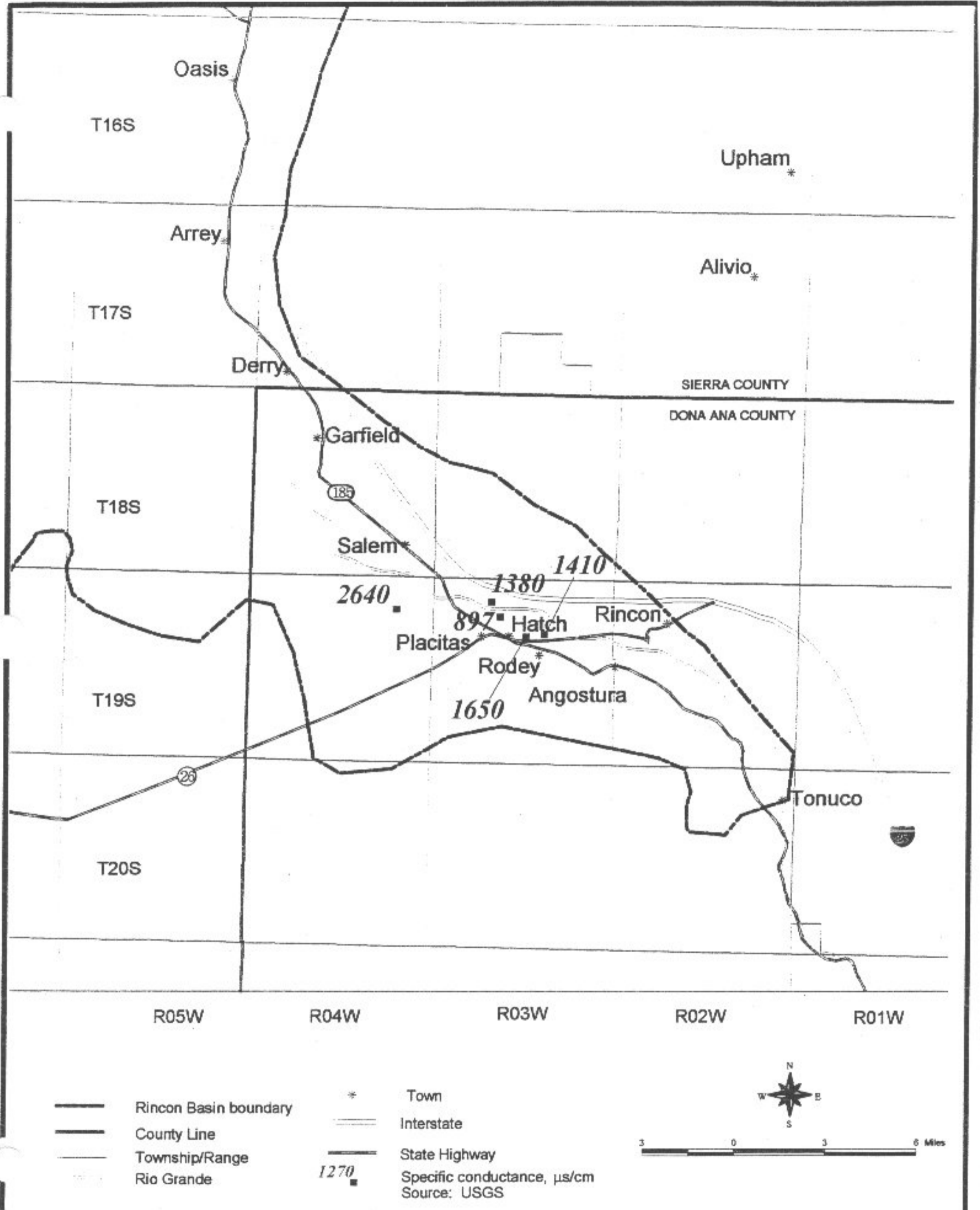


Figure 6.57 Map showing specific conductance, 1960 and before, Rincon Basin, Dona Ana County, New Mexico.